



Ritz Grande

The Ritz-Carlton, Sarasota

Jack Dusty

Hertz Rent A Car

Ritz Carlton Dr

Ritz Carlton Dr

Ritz Carlton Dr

Ritz Carlton Dr

1st St

1st St

1st St

Google

Bay Isles Shopping Center

Joey D's Chicago Style Eatery & Pizzeria...

N Tamiami Trail

41

N Tamiami Trail

N Tamiami Trail



# THE RITZ-CARLTON RESIDENCES

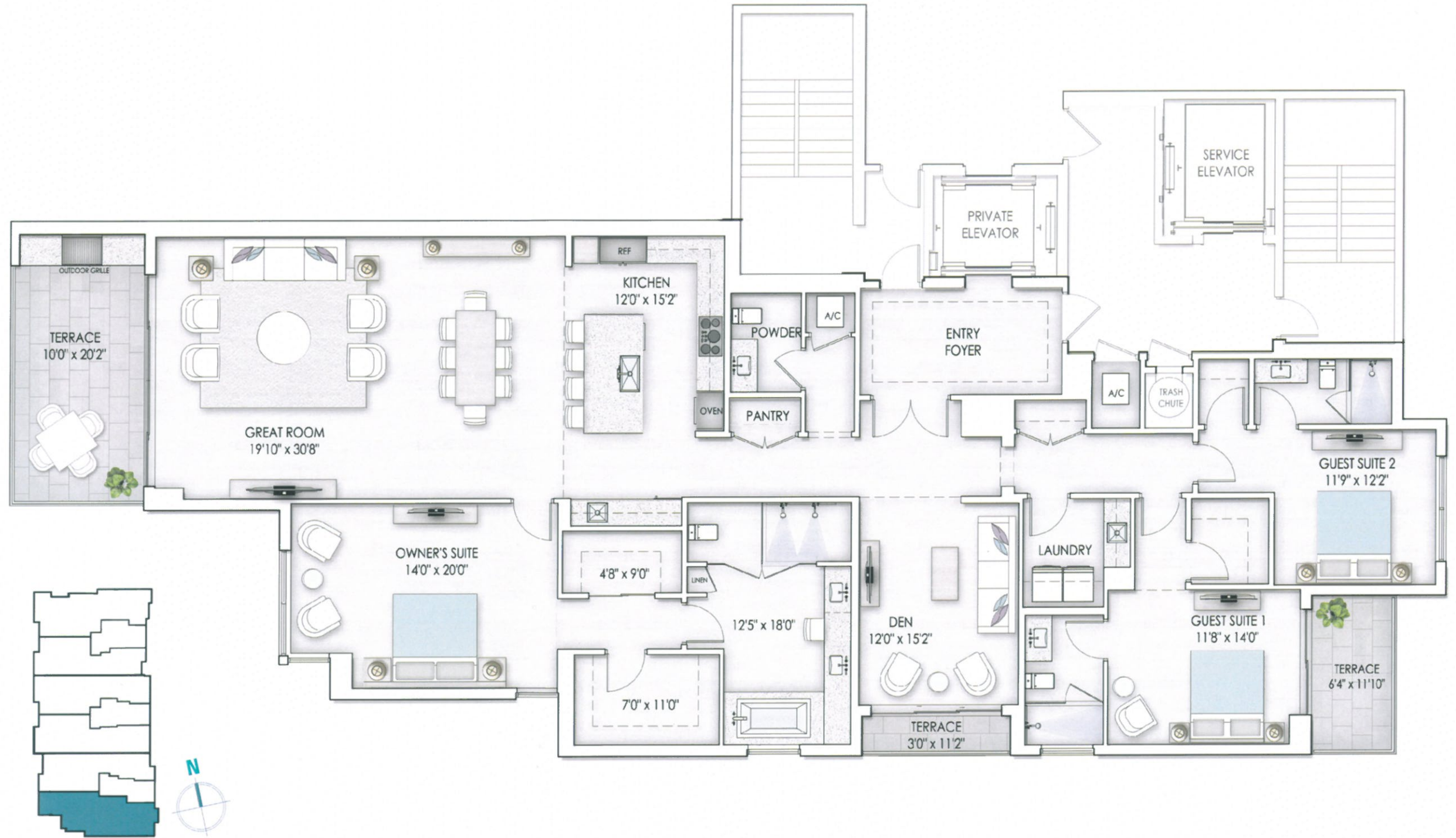
SARASOTA

## ARMAND

Floorplan

3 Bedroom | 3.5 Bath | Den

INTERIOR:	3,066 SF
EXTERIOR:	317 SF
TOTAL:	3,383 SF



## THE GRANDE

941-702-2300 | 1111 Ritz-Carlton Drive | Sarasota, Florida 34236 | [www.TheResidencesSarasota.com](http://www.TheResidencesSarasota.com)

The Ritz-Carlton Residences, Sarasota are not owned, developed or sold by The Ritz-Carlton Hotel Company, L.L.C. or its affiliates ("Ritz-Carlton"). The Grande Residences LLLP uses The Ritz-Carlton marks under a license from Ritz-Carlton, which has not confirmed the accuracy of any of the statements or representations made herein.



Broker Participation Welcomed and Encouraged. ORAL REPRESENTATIONS CANNOT BE RELIED UPON AS CORRECTLY STATING REPRESENTATIONS OF THE SELLER. FOR CORRECT REPRESENTATIONS, MAKE REFERENCE TO THIS BROCHURE AND TO THE DOCUMENTS REQUIRED BY SECTION 718.503, FLORIDA STATUTES, TO BE FURNISHED BY A SELLER TO A BUYER OR LESSEE. This project has been filed in the state of Florida and no other state. This is not an offer to sell or solicitation of offers to buy the condominium units in states where such offer or solicitation cannot be made. Prices and availability are subject to change at any time without notice. All dimensions are approximate and all floorplans and development plans are subject to change. There are various methods for calculating the total square footage of a condominium unit, and depending on the method of calculation, the quoted square footage of a condominium unit may vary by more than a nominal amount. The total condominium unit square footages as shown in this brochure are based on the "Architectural Method" of measurement and the exterior perimeter measurements of the condominium unit, which include exterior walls and interior columns, are fifty percent of demising walls. These square footage calculations are higher than the interior area space calculations for the condominium units. Please see the Declaration of Condominium for more information.

**KOLTER**

Michael Saunders & Company



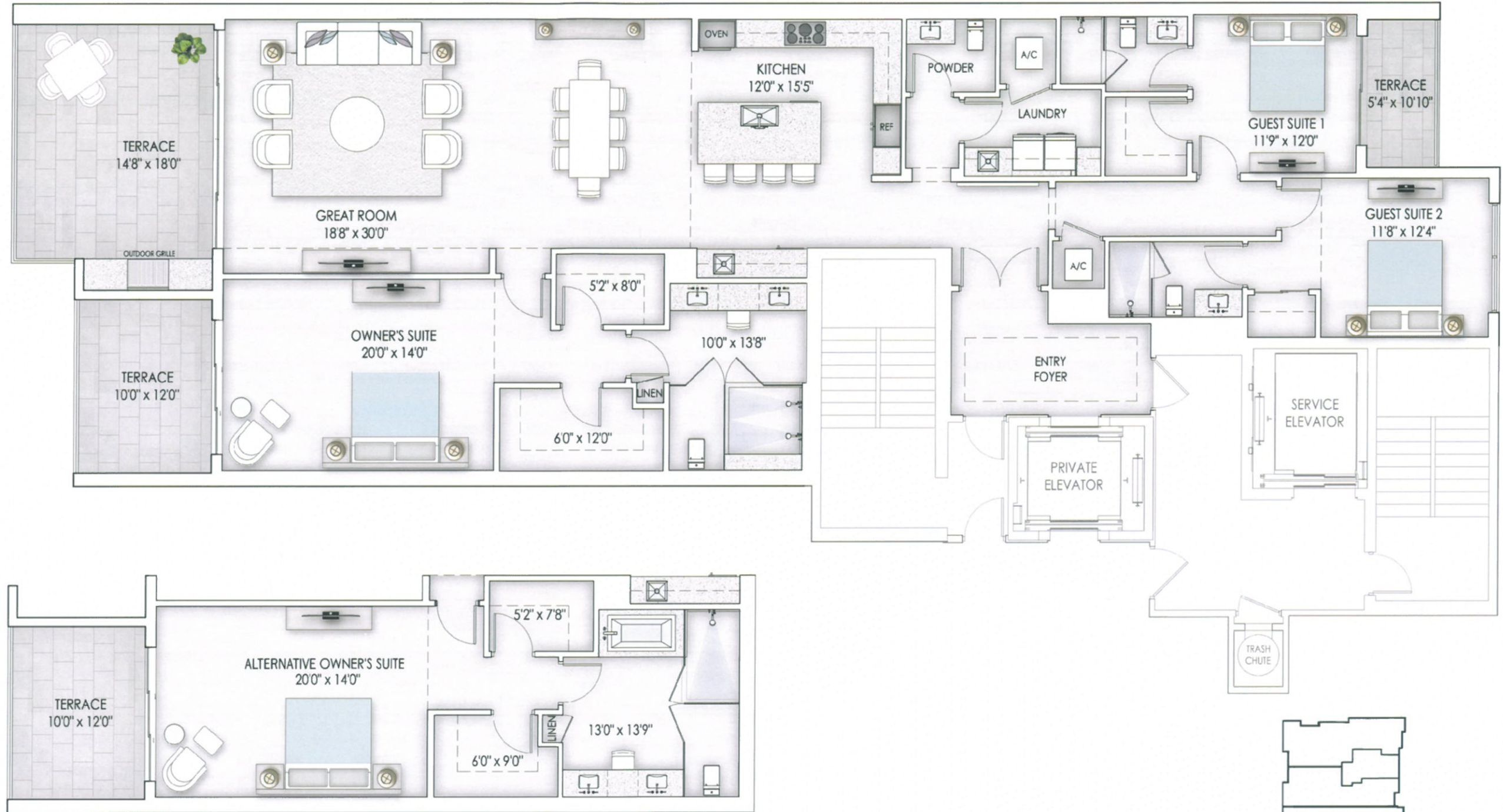
# THE RITZ-CARLTON RESIDENCES

SARASOTA

## BRISTOL

Floorplan  
3 Bedroom | 3.5 Bath

INTERIOR:	2,523 SF
EXTERIOR:	603 SF
TOTAL:	3,126 SF



## THE GRANDE

941-702-2300 | 1111 Ritz-Carlton Drive | Sarasota, Florida 34236 | [www.TheResidencesSarasota.com](http://www.TheResidencesSarasota.com)

The Ritz-Carlton Residences, Sarasota are not owned, developed or sold by The Ritz-Carlton Hotel Company, L.L.C. or its affiliates ("Ritz-Carlton"). The Grande Residences LLLP uses The Ritz-Carlton marks under a license from Ritz-Carlton, which has not confirmed the accuracy of any of the statements or representations made herein.



Broker Participation Welcomed and Encouraged. ORAL REPRESENTATIONS CANNOT BE RELIED UPON AS CORRECTLY STATING REPRESENTATIONS OF THE SELLER. FOR CORRECT REPRESENTATIONS, MAKE REFERENCE TO THIS BROCHURE AND TO THE DOCUMENTS REQUIRED BY SECTION 718.503, FLORIDA STATUTES, TO BE FURNISHED BY A SELLER TO A BUYER OR LESSEE. This project has been filed in the state of Florida and no other state. This is not an offer to sell or solicitation of offers to buy the condominium units in states where such offer or solicitation cannot be made. Prices and availability are subject to change at any time without notice. All dimensions are approximate and all floorplans and development plans are subject to change. There are various methods for calculating the total square footage of a condominium unit, and depending on the method of calculation, the quoted square footage of a condominium unit may vary by more than a nominal amount. The total condominium unit square footages as shown in this brochure are based on the "Architectural Method" of measurement and the exterior perimeter measurements of the condominium unit, which include exterior walls and interior columns, are fifty percent of demising walls. These square footage calculations are higher than the interior area space calculations for the condominium units. Please see the Declaration of Condominium for more information.

**KOLTER**

Michael Saunders & Company



# THE RITZ-CARLTON RESIDENCES

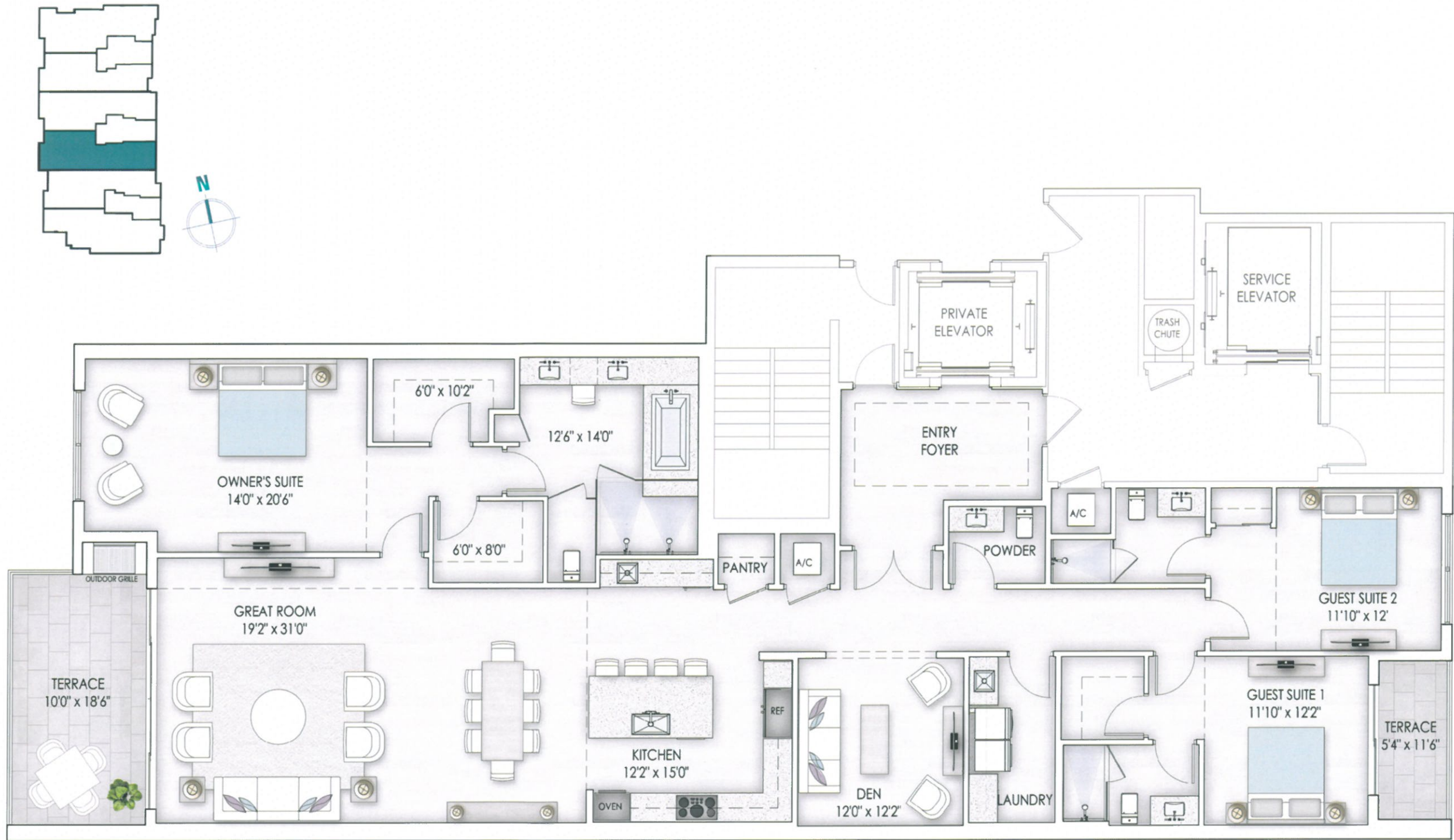
SARASOTA

## CHELSEA

Floorplan

3 Bedroom | 3.5 Bath | Den

INTERIOR:	2,841 SF
EXTERIOR:	258 SF
TOTAL:	3,099 SF



## THE GRANDE

941-702-2300 | 1111 Ritz-Carlton Drive | Sarasota, Florida 34236 | [www.TheResidencesSarasota.com](http://www.TheResidencesSarasota.com)

The Ritz-Carlton Residences, Sarasota are not owned, developed or sold by The Ritz-Carlton Hotel Company, L.L.C. or its affiliates ("Ritz-Carlton"). The Grande Residences LLLP uses The Ritz-Carlton marks under a license from Ritz-Carlton, which has not confirmed the accuracy of any of the statements or representations made herein.



Broker Participation Welcomed and Encouraged. ORAL REPRESENTATIONS CANNOT BE RELIED UPON AS CORRECTLY STATING REPRESENTATIONS OF THE SELLER. FOR CORRECT REPRESENTATIONS, MAKE REFERENCE TO THIS BROCHURE AND TO THE DOCUMENTS REQUIRED BY SECTION 718.503, FLORIDA STATUTES, TO BE FURNISHED BY A SELLER TO A BUYER OR LESSEE. This project has been filed in the state of Florida and no other state. This is not an offer to sell or solicitation of offers to buy the condominium units in states where such offer or solicitation cannot be made. Prices and availability are subject to change at any time without notice. All dimensions are approximate and all floorplans and development plans are subject to change. There are various methods for calculating the total square footage of a condominium unit, and depending on the method of calculation, the quoted square footage of a condominium unit may vary by more than a nominal amount. The total condominium unit square footages as shown in this brochure are based on the "Architectural Method" of measurement and the exterior perimeter measurements of the condominium unit, which include exterior walls and interior columns, are fifty percent of demising walls. These square footage calculations are higher than the interior area space calculations for the condominium units. Please see the Declaration of Condominium for more information.

**KOLTER**

Michael Saunders & Company



# THE RITZ-CARLTON RESIDENCES

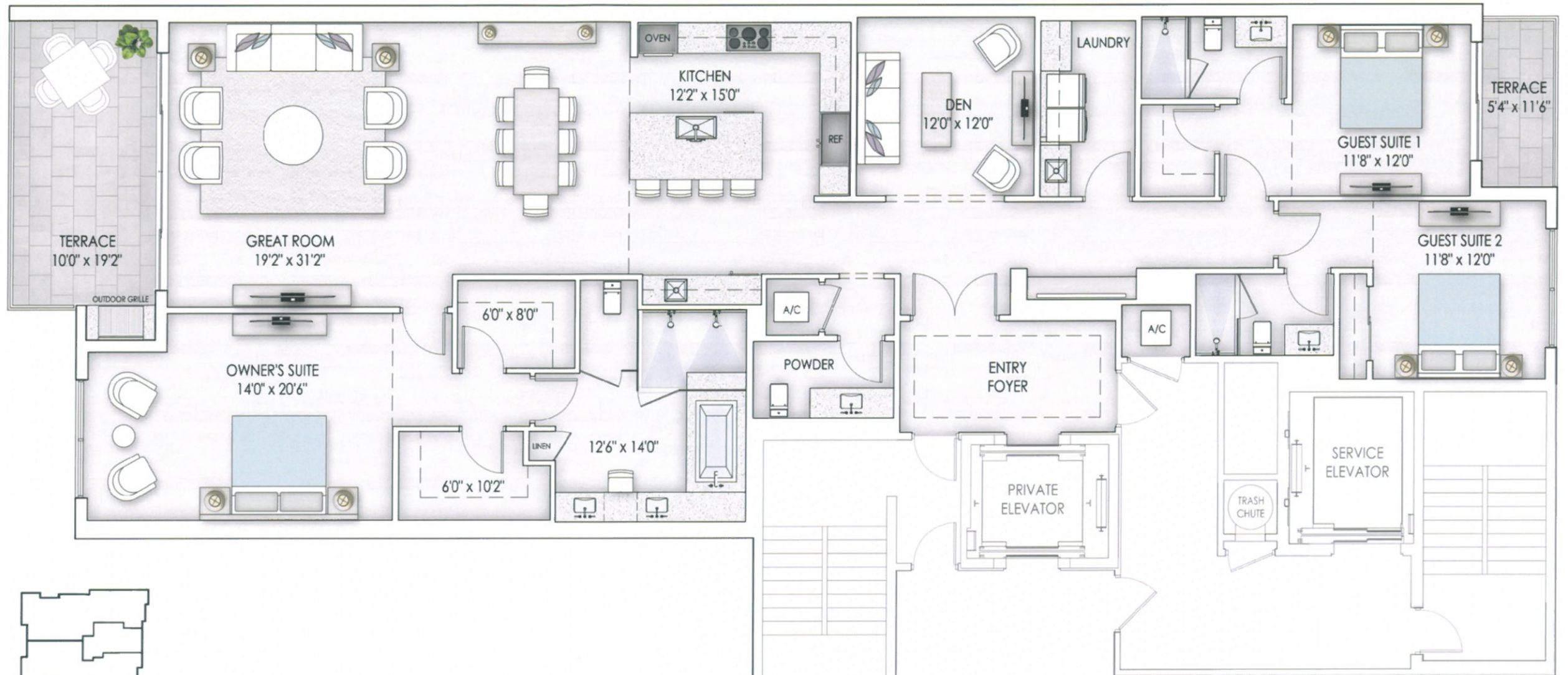
SARASOTA

## DEVEREAUX

Floorplan

3 Bedroom | 3.5 Bath | Den

INTERIOR:	2,620 SF
EXTERIOR:	260 SF
TOTAL:	2,880 SF



## THE GRANDE

941-702-2300 | 1111 Ritz-Carlton Drive | Sarasota, Florida 34236 | [www.TheResidencesSarasota.com](http://www.TheResidencesSarasota.com)

The Ritz-Carlton Residences, Sarasota are not owned, developed or sold by The Ritz-Carlton Hotel Company, L.L.C. or its affiliates ("Ritz-Carlton"). The Grande Residences LLLP uses The Ritz-Carlton marks under a license from Ritz-Carlton, which has not confirmed the accuracy of any of the statements or representations made herein.



Broker Participation Welcomed and Encouraged. ORAL REPRESENTATIONS CANNOT BE RELIED UPON AS CORRECTLY STATING REPRESENTATIONS OF THE SELLER. FOR CORRECT REPRESENTATIONS, MAKE REFERENCE TO THIS BROCHURE AND TO THE DOCUMENTS REQUIRED BY SECTION 718.503, FLORIDA STATUTES, TO BE FURNISHED BY A SELLER TO A BUYER OR LESSEE. This project has been filed in the state of Florida and no other state. This is not an offer to sell or solicitation of offers to buy the condominium units in states where such offer or solicitation cannot be made. Prices and availability are subject to change at any time without notice. All dimensions are approximate and all floorplans and development plans are subject to change. There are various methods for calculating the total square footage of a condominium unit, and depending on the method of calculation, the quoted square footage of a condominium unit may vary by more than a nominal amount. The total condominium unit square footages as shown in this brochure are based on the "Architectural Method" of measurement and the exterior perimeter measurements of the condominium unit, which include exterior walls and interior columns, are fifty percent of demising walls. These square footage calculations are higher than the interior area space calculations for the condominium units. Please see the Declaration of Condominium for more information.

**KOLTER**

Michael Saunders & Company



# THE RITZ-CARLTON RESIDENCES

SARASOTA

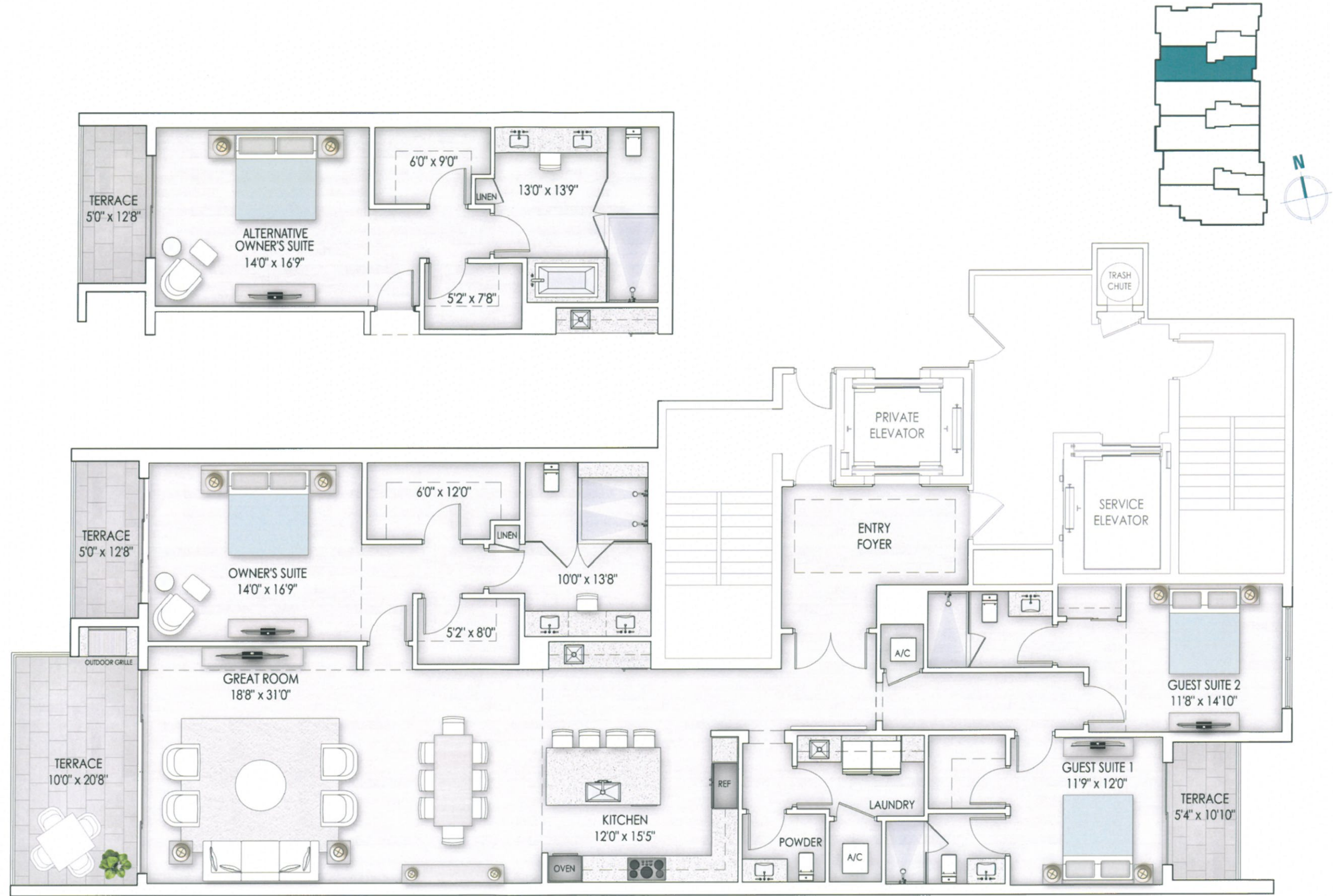
## EMERSON

Floorplan

3 Bedroom | 3.5 Bath

INTERIOR:	2,561 SF
EXTERIOR:	351 SF
TOTAL:	2,912 SF

## THE GRANDE



941-702-2300 | 1111 Ritz-Carlton Drive | Sarasota, Florida 34236 | [www.TheResidencesSarasota.com](http://www.TheResidencesSarasota.com)

The Ritz-Carlton Residences, Sarasota are not owned, developed or sold by The Ritz-Carlton Hotel Company, L.L.C. or its affiliates ("Ritz-Carlton"). The Grande Residences LLLP uses The Ritz-Carlton marks under a license from Ritz-Carlton, which has not confirmed the accuracy of any of the statements or representations made herein.



Broker Participation Welcomed and Encouraged. ORAL REPRESENTATIONS CANNOT BE RELIED UPON AS CORRECTLY STATING REPRESENTATIONS OF THE SELLER. FOR CORRECT REPRESENTATIONS, MAKE REFERENCE TO THIS BROCHURE AND TO THE DOCUMENTS REQUIRED BY SECTION 718.503, FLORIDA STATUTES, TO BE FURNISHED BY A SELLER TO A BUYER OR LESSEE. This project has been filed in the state of Florida and no other state. This is not an offer to sell or solicitation of offers to buy the condominium units in states where such offer or solicitation cannot be made. Prices and availability are subject to change at any time without notice. All dimensions are approximate and all floorplans and development plans are subject to change. There are various methods for calculating the total square footage of a condominium unit, and depending on the method of calculation, the quoted square footage of a condominium unit may vary by more than a nominal amount. The total condominium unit square footages as shown in this brochure are based on the "Architectural Method" of measurement and the exterior perimeter measurements of the condominium unit, which include exterior walls and interior columns, are fifty percent of demising walls. These square footage calculations are higher than the interior area space calculations for the condominium units. Please see the Declaration of Condominium for more information.

**KOLTER**

Michael Saunders & Company



# THE RITZ-CARLTON RESIDENCES

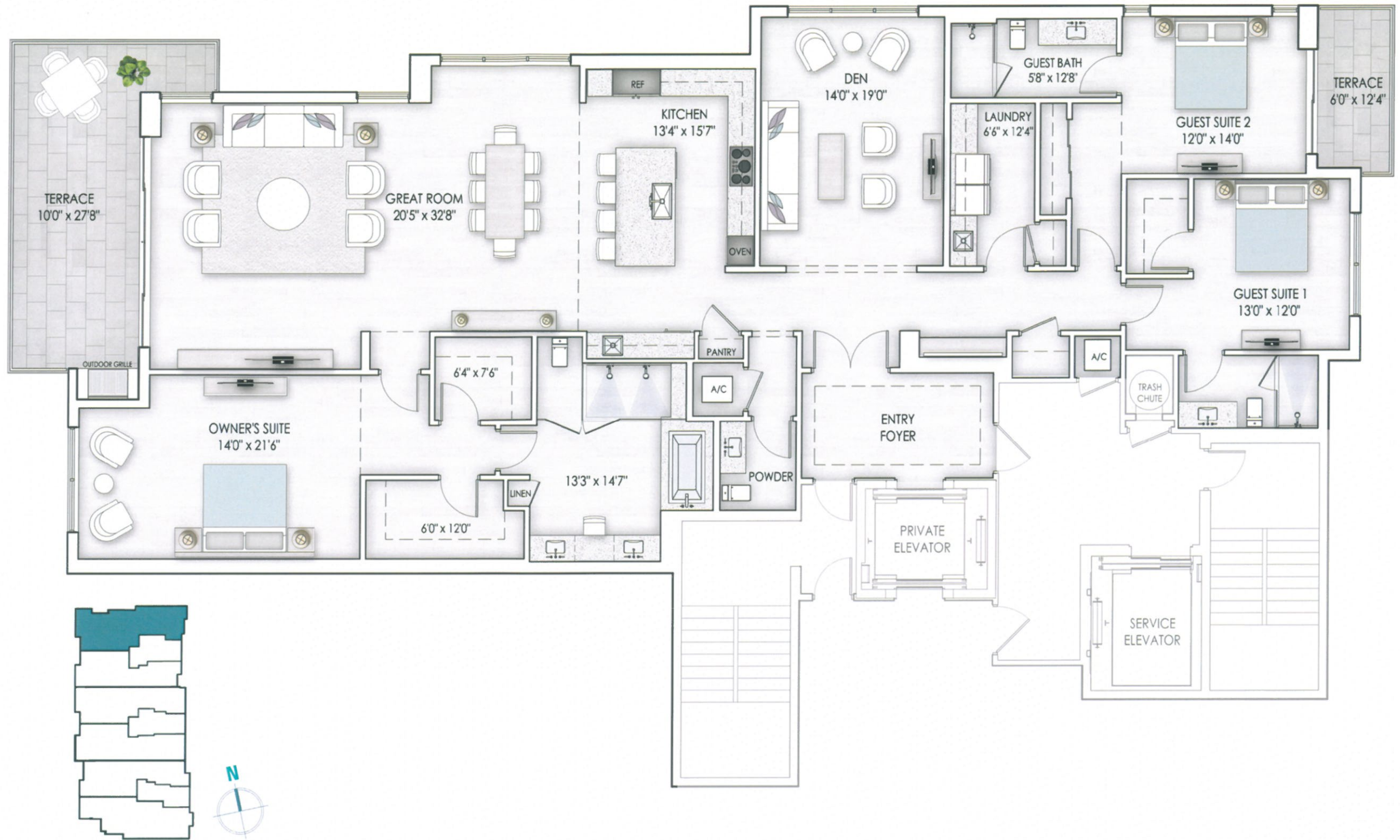
SARASOTA

## FAIRCHILD

Floorplan

3 Bedroom | 3.5 Bath | Den

INTERIOR:	3,275 SF
EXTERIOR:	357 SF
TOTAL:	3,632 SF



## THE GRANDE

941-702-2300 | 1111 Ritz-Carlton Drive | Sarasota, Florida 34236 | [www.TheResidencesSarasota.com](http://www.TheResidencesSarasota.com)

The Ritz-Carlton Residences, Sarasota are not owned, developed or sold by The Ritz-Carlton Hotel Company, L.L.C. or its affiliates ("Ritz-Carlton"). The Grande Residences LLLP uses The Ritz-Carlton marks under a license from Ritz-Carlton, which has not confirmed the accuracy of any of the statements or representations made herein.



Broker Participation Welcomed and Encouraged. ORAL REPRESENTATIONS CANNOT BE RELIED UPON AS CORRECTLY STATING REPRESENTATIONS OF THE SELLER. FOR CORRECT REPRESENTATIONS, MAKE REFERENCE TO THIS BROCHURE AND TO THE DOCUMENTS REQUIRED BY SECTION 718.503, FLORIDA STATUTES, TO BE FURNISHED BY A SELLER TO A BUYER OR LESSEE. This project has been filed in the state of Florida and no other state. This is not an offer to sell or solicitation of offers to buy the condominium units in states where such offer or solicitation cannot be made. Prices and availability are subject to change at any time without notice. All dimensions are approximate and all floorplans and development plans are subject to change. There are various methods for calculating the total square footage of a condominium unit, and depending on the method of calculation, the quoted square footage of a condominium unit may vary by more than a nominal amount. The total condominium unit square footages as shown in this brochure are based on the "Architectural Method" of measurement and the exterior perimeter measurements of the condominium unit, which include exterior walls and interior columns, are fifty percent of demising walls. These square footage calculations are higher than the interior area space calculations for the condominium units. Please see the Declaration of Condominium for more information.

**KOLTER**

Michael Saunders & Company