

PREVIEW OPENING PACKAGE



ORANGE CLUB

BOUTIQUE CONDOS & TOWNHOMES IN BURNS SQUARE





ORAL REPRESENTATIONS CANNOT BE RELIED UPON AS CORRECTLY STATING REPRESENTATIONS OF THE DEVELOPER. FOR CORRECT REPRESENTATIONS, MAKE REFERENCE TO THE DOCUMENTS REQUIRED BY SECTION 718.503, FLORIDA STATUTES, TO BE FURNISHED BY A DEVELOPER TO A BUYER OR LESSEE.

All renderings are artist's concept. Furnishings and accessories represented are for illustration purposes only and are not included.



ORANGE CLUB

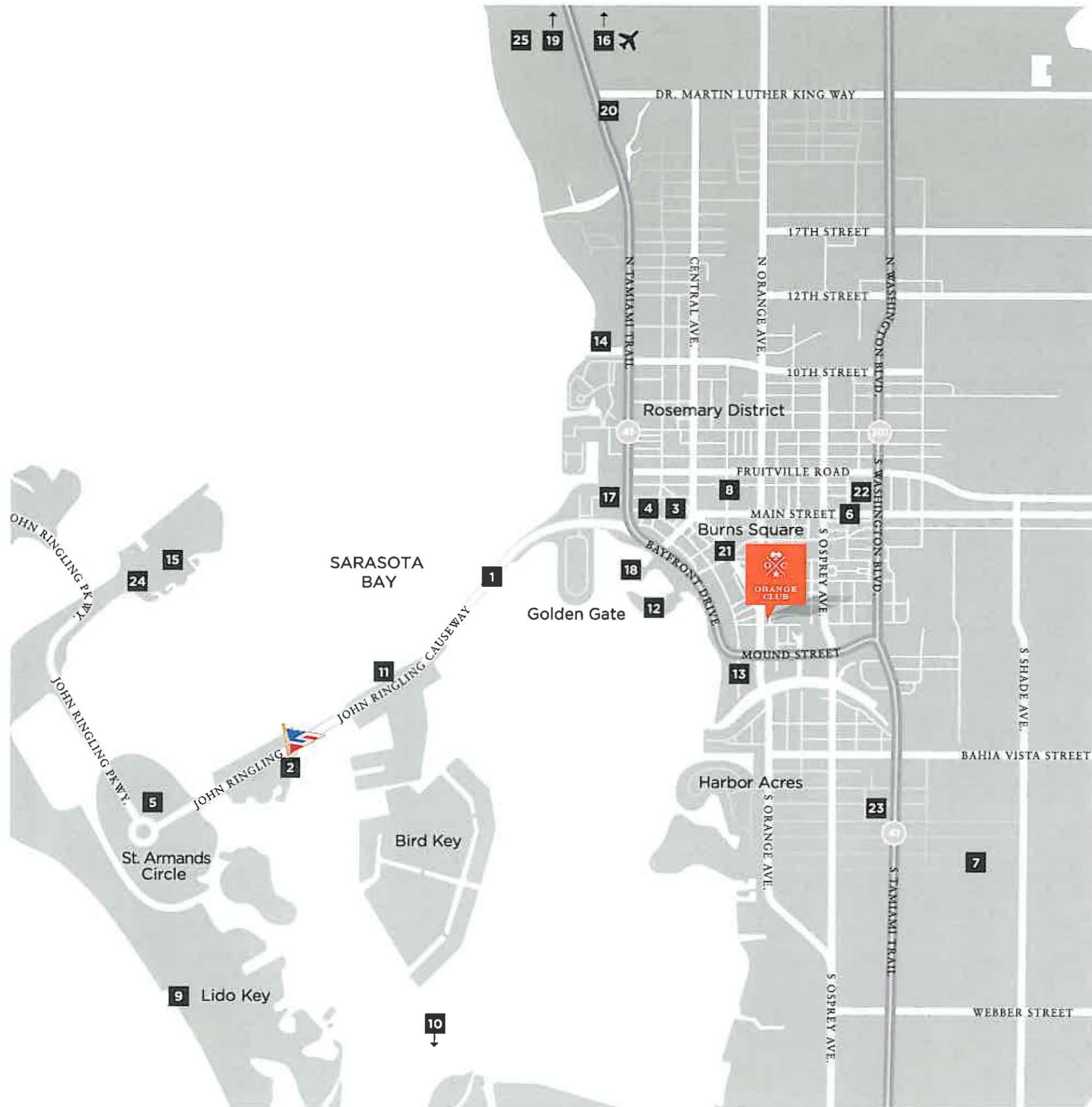
BOUTIQUE CONDOS & TOWNHOMES IN BURNS SQUARE

WELCOME TO AN ALL INCLUSIVE LIFESTYLE

Infused with luxury and fine architecture, Orange Club boutique condominiums and townhomes are the ultimate in all inclusive living. Located at 635 S. Orange Avenue, this stylish and elegant community is just steps from historic Burns Square, yet retains a desirable sense of seclusion. Experience carefree living and enjoy sophisticated luxury in a stunning oasis you'll call home.

[ORANGECLUBSARASOTA.COM](https://www.orangeclubsarasota.com)

CLOSE TO EVERYTHING THAT MATTERS



- 1 John Ringling Bridge
- 2 Sarasota Yacht Club
- 3 Sarasota Opera House
- 4 Florida Studio Theatre
- 5 St. Armands Circle
- 6 Main Street, Sarasota
- 7 Hillview Street, Sarasota
- 8 Whole Foods Market
- 9 Lido Beach
- 10 Siesta Key
- 11 Bayfront Park
- 12 Island Park
- 13 Marie Selby Botanical Gardens
- 14 Centennial Park
- 15 Ken Thompson Boat Ramp
- 16 Sarasota Bradenton Int. Airport
- 17 The Ritz Carlton Sarasota
- 18 Marina Jack
- 19 Asolo Repertory Theatre
- 20 Ringling College of Art & Design
- 21 Historic Burns Square
- 22 Regal Hollywood Cinema 20
- 23 Sarasota Memorial Hospital
- 24 Mote Marine Laboratory
- 25 Sarasota Museum of Art



PARKS CAFES
THEATRE



RESTAURANTS
WINE BAR



WATERFRONT
OFFICES BUSINESS



SHOPPING ARTS
FASHION



DISCOVER HISTORIC BURNS SQUARE

Orange Club is just steps from the colorful and charming Burns Square. As one of southwest Florida's most stylish destinations, Burns Square offers antique shops, quaint restaurants and cafes, chic salons, and fine galleries. Located in downtown Sarasota, south of Main Street just past the intersection of Ringling Boulevard and S. Pineapple Avenue, Burns Square has an aura unlike any other. Cobblestone streets lined with lush palms and colorful buildings exude an old-world atmosphere that never gets old.

A MASTER PLANNED COMMUNITY

IN THE HEART OF
BURNS SQUARE

An intimate community of only 15 condominiums and 9 townhomes makes Orange Club the most desirable boutique residence in downtown Sarasota. Retreat from your stunning condominium or townhome and indulge in the tranquil swimming pool. Relish in a tropical escape or take a stroll through Burns Square, just steps from your doorway. Whatever you decide, Orange Club can conveniently provide.



Actual concept





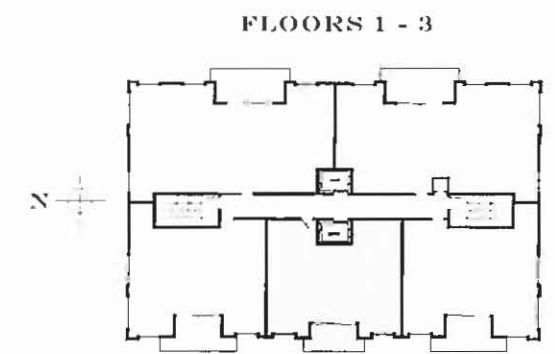
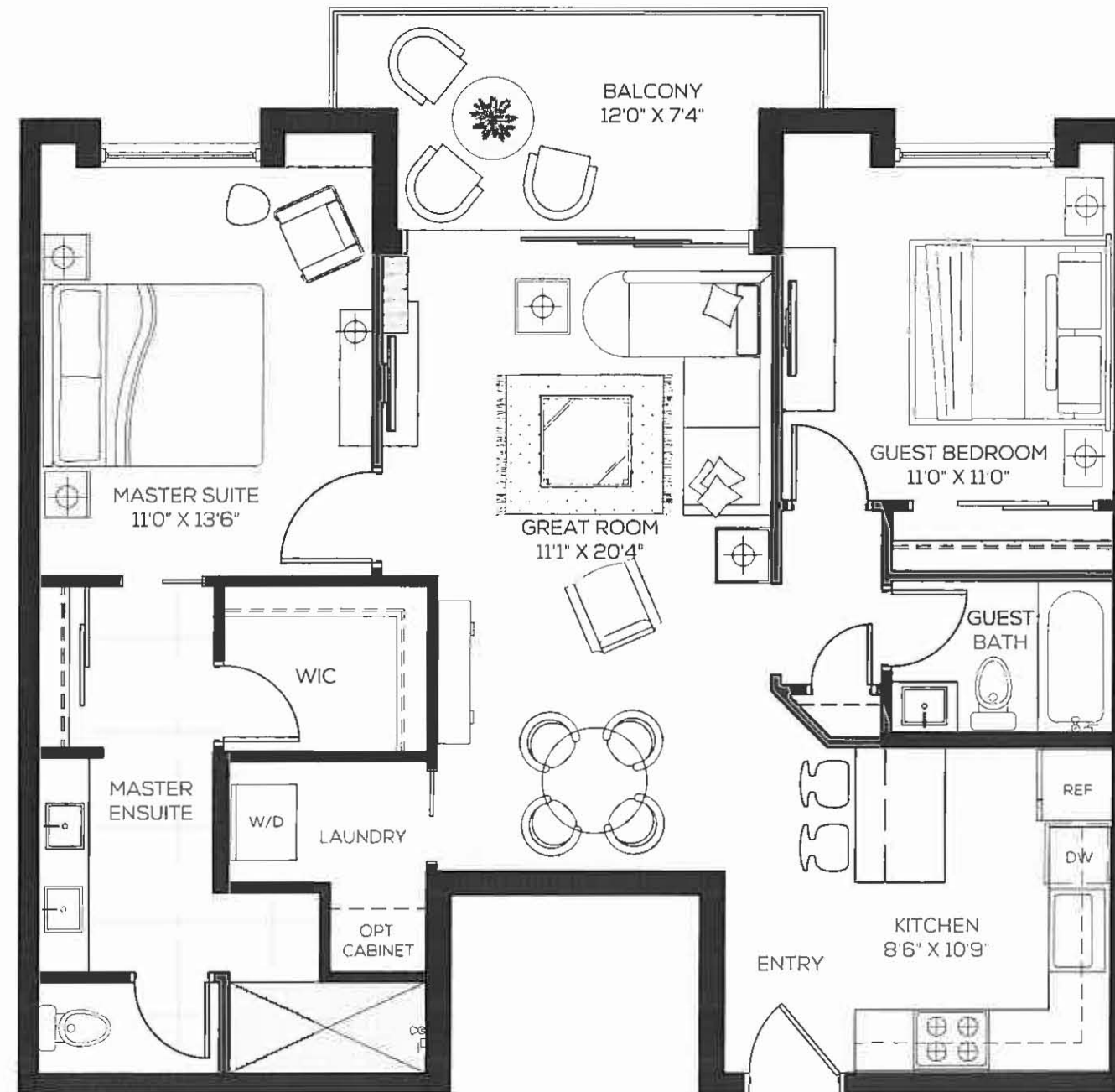
CONDOMINIUM RESIDENCES

FROM
THE \$500's

Orange Club condominium residences are just as spacious as they are luxurious. This four-storey, mid-rise condominium features retail at street level and 15 residential suites above. Suite styles range from 1,049 sq.ft. to 1,544 sq.ft.



THE CORAL 1,049 SQ.FT. / BOUTIQUE CONDO RESIDENCES (102, 202, 302)



ORANGE CLUB

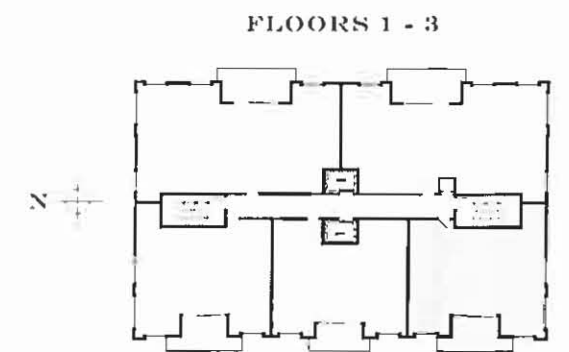
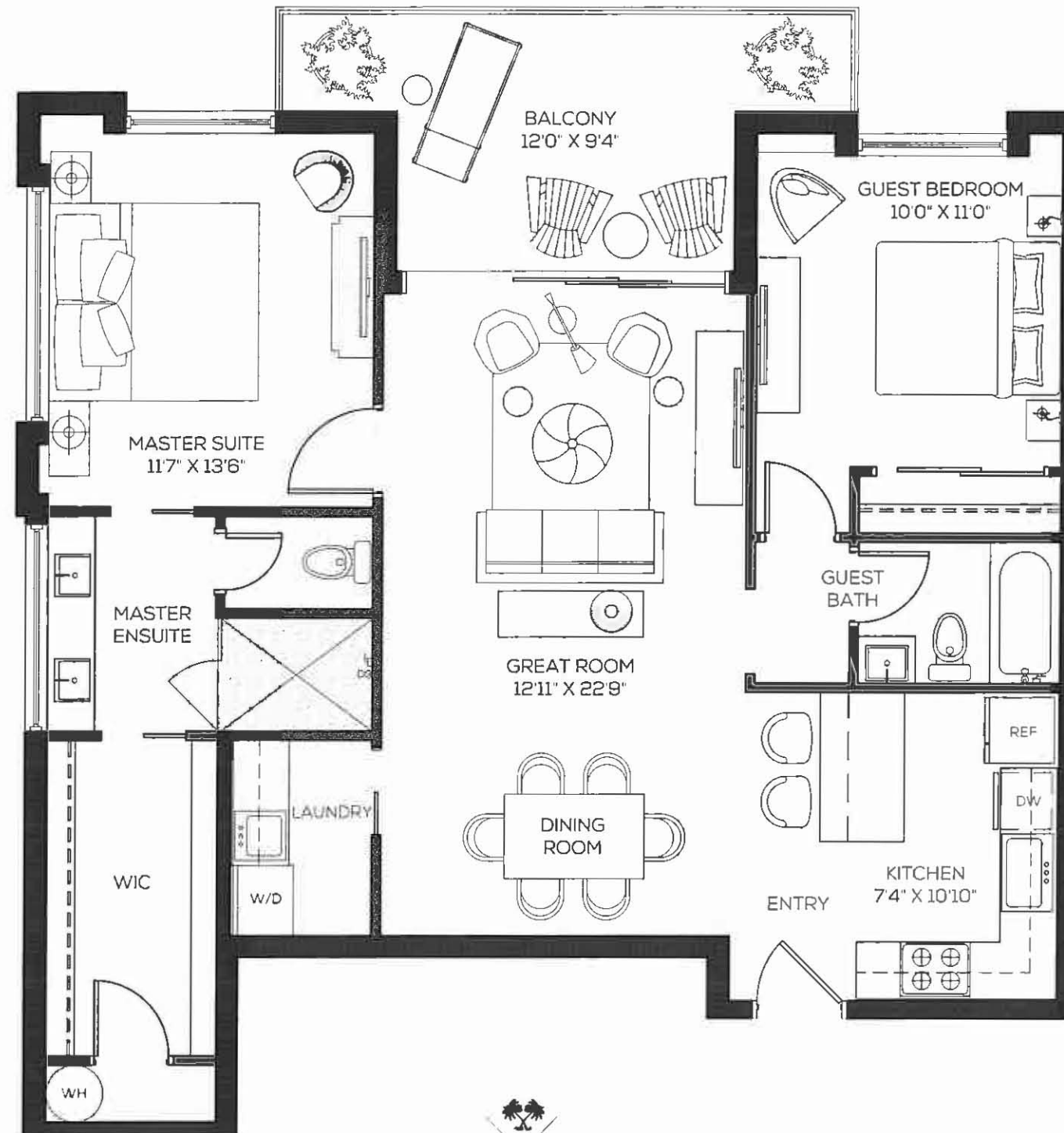
BOUTIQUE CONDOS & TOWNHOMES IN BURNS SQUARE

All renderings are artist's concept. Plans and specifications are subject to change without notice. Actual usable floorspace, dimensions and areas may vary from actual as built construction. E. & O.E. Furnishings, built-ins, BBQ and accessories represented are for illustration purposes only and are not included.

SUITE KEY PLAN



THE BAYSIDE 1,104 SQ.FT. / BOUTIQUE CONDO RESIDENCES (101, 201, 301)



ORANGE CLUB

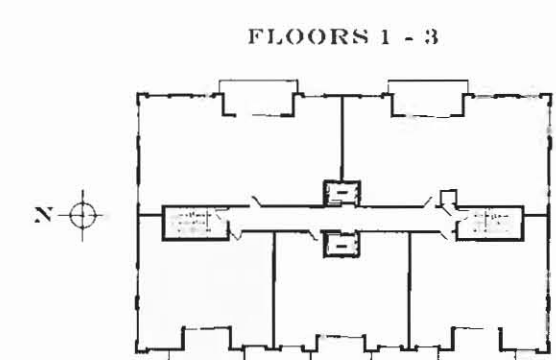
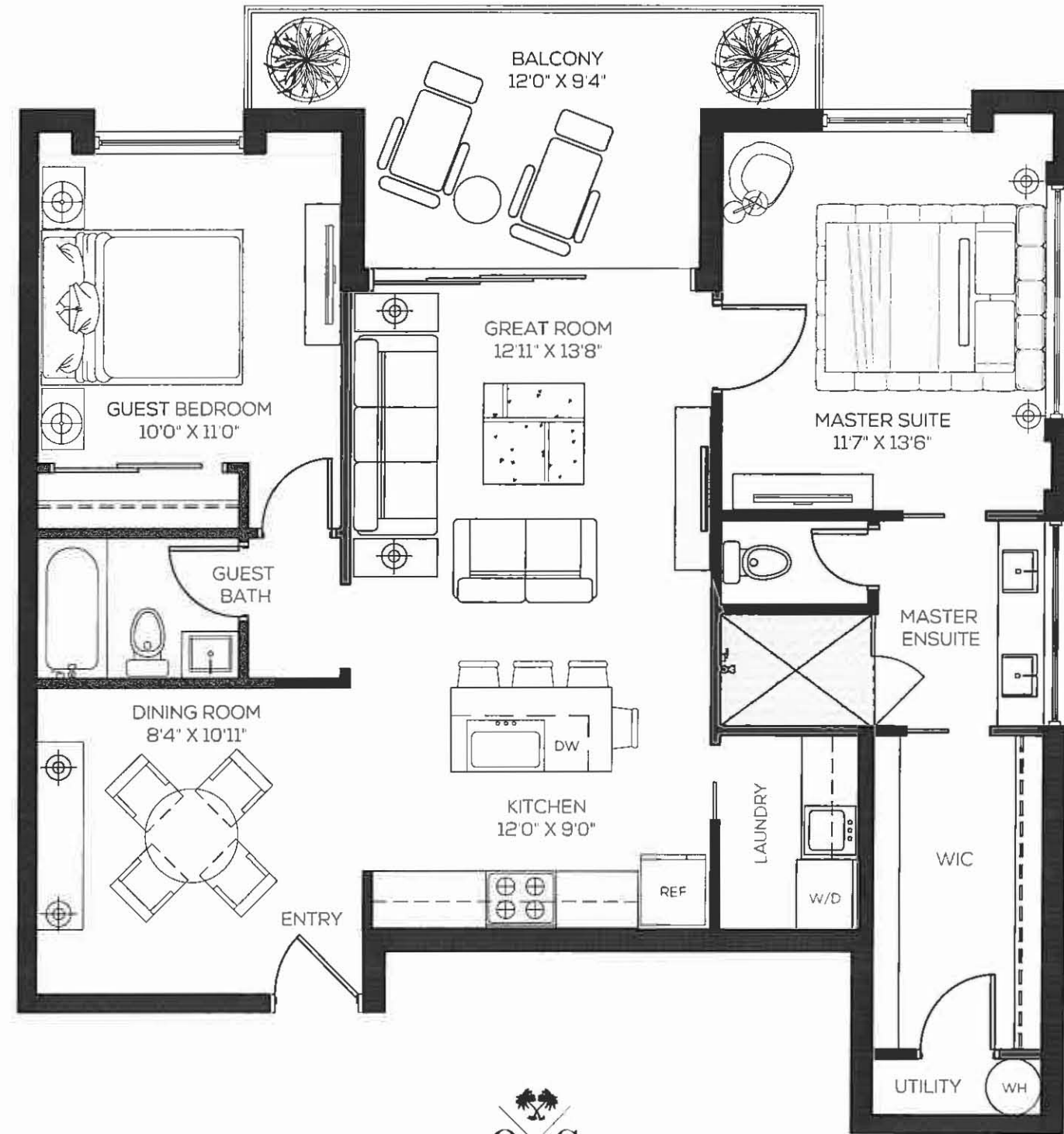
BOUTIQUE CONDOS & TOWNHOMES IN BURNS SQUARE

All renderings are artist's concept. Plans and specifications are subject to change without notice. Actual usable floorspace, dimensions and areas may vary from actual as built construction. E. & O.E. Furnishings, built-ins, BBQ and accessories represented are for illustration purposes only and are not included.

SUITE KEY PLAN



THE HARBOR 1,104 SQ.FT. / BOUTIQUE CONDO RESIDENCES (103, 203, 303)



ORANGE CLUB

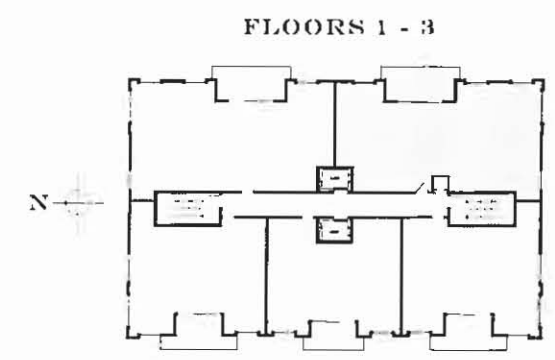
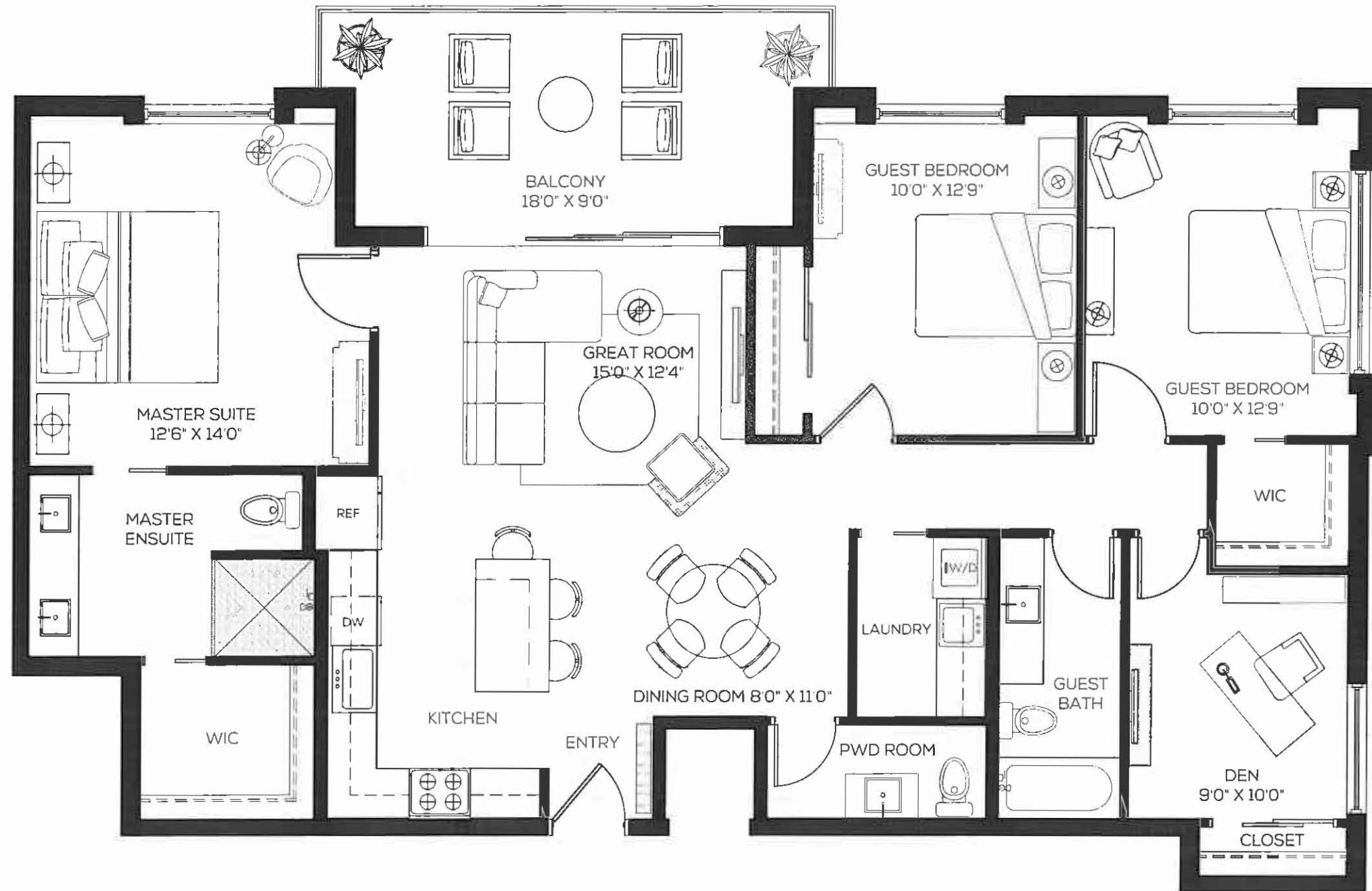
BOUTIQUE CONDOS & TOWNHOMES IN BURNS SQUARE

All renderings are artist's concept. Plans and specifications are subject to change without notice. Actual usable floorspace, dimensions and areas may vary from actual as built construction. E & O.E. Furnishings, built-ins, BBQ and accessories represented are for illustration purposes only and are not included.

SUITE KEY PLAN



THE SUNRISE 1,523 SQ.FT. / BOUTIQUE CONDO RESIDENCES (105, 205, 305)



ORANGE CLUB

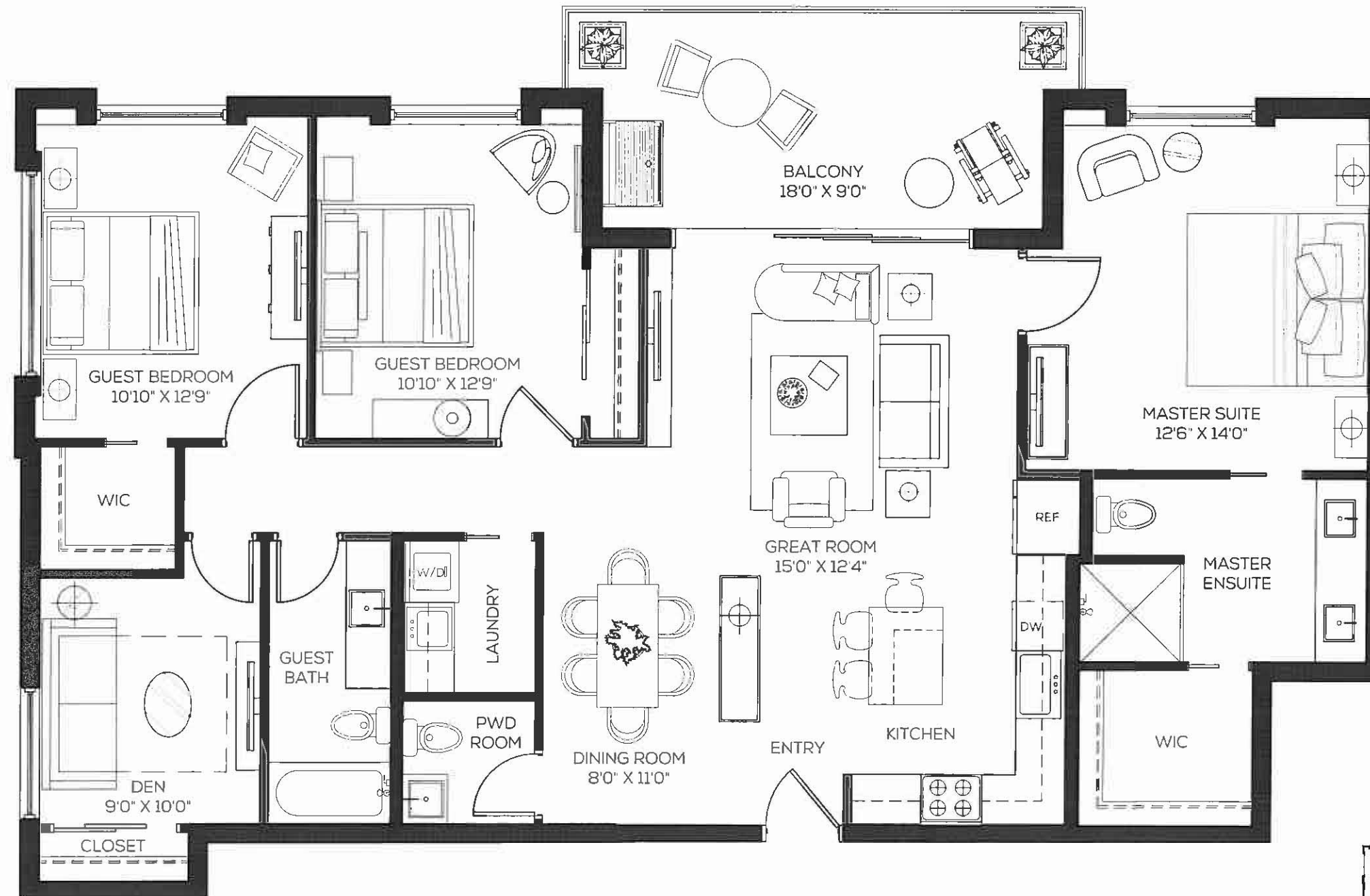
BOUTIQUE CONDOS & TOWNHOMES IN BURNS SQUARE

All renderings are artist's concept. Plans and specifications are subject to change without notice. Actual usable floorspace, dimensions and areas may vary from actual as built construction. E & O E. Furnishings, built-ins, BBQ and accessories represented are for illustration purposes only and are not included.

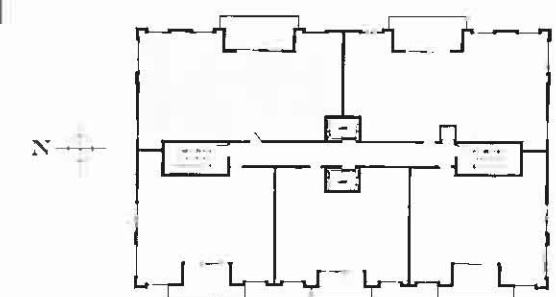
SUITE KEY PLAN



THE BEACH HOUSE 1,544 SQ.FT. / BOUTIQUE CONDO RESIDENCES (104, 204, 304)



FLOORS 1 - 3



ORANGE CLUB

BOUTIQUE CONDOS & TOWNHOMES IN BURNS SQUARE

All renderings are artist's concept. Plans and specifications are subject to change without notice. Actual usable floorspace, dimensions and areas may vary from actual as built construction. E & O.E. Furnishings, built-ins, BBQ and accessories represented are for illustration purposes only and are not included.

SUITE KEY PLAN

A close-up photograph of a person's hands holding a white ceramic mug filled with coffee. The person is using a spoon to stir the coffee. The background is slightly blurred, showing a table with a pair of sunglasses. The overall tone is warm and intimate.

S M A L L

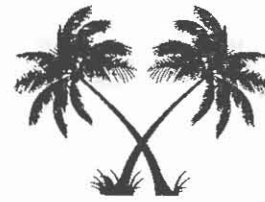
INTIMATE BOUTIQUE CONDOMINIUMS

M O M E N T S

IN BURNS SQUARE

I N T I M E





TOWNHOME RESIDENCES

FROM
THE **\$890'S**

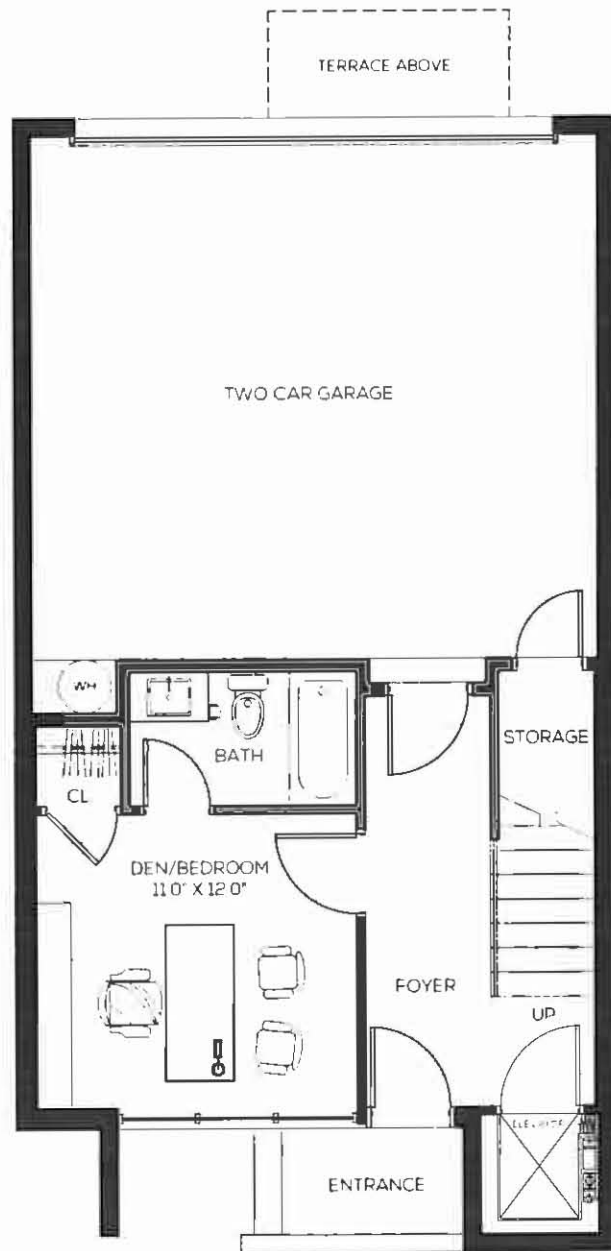
Orange Club townhomes deliver elegant living. These 2,300 sq.ft. townhomes feature 3 luxurious floors, 2 car garage and include personal roof decks where you will catch magnificent sunsets night after night.



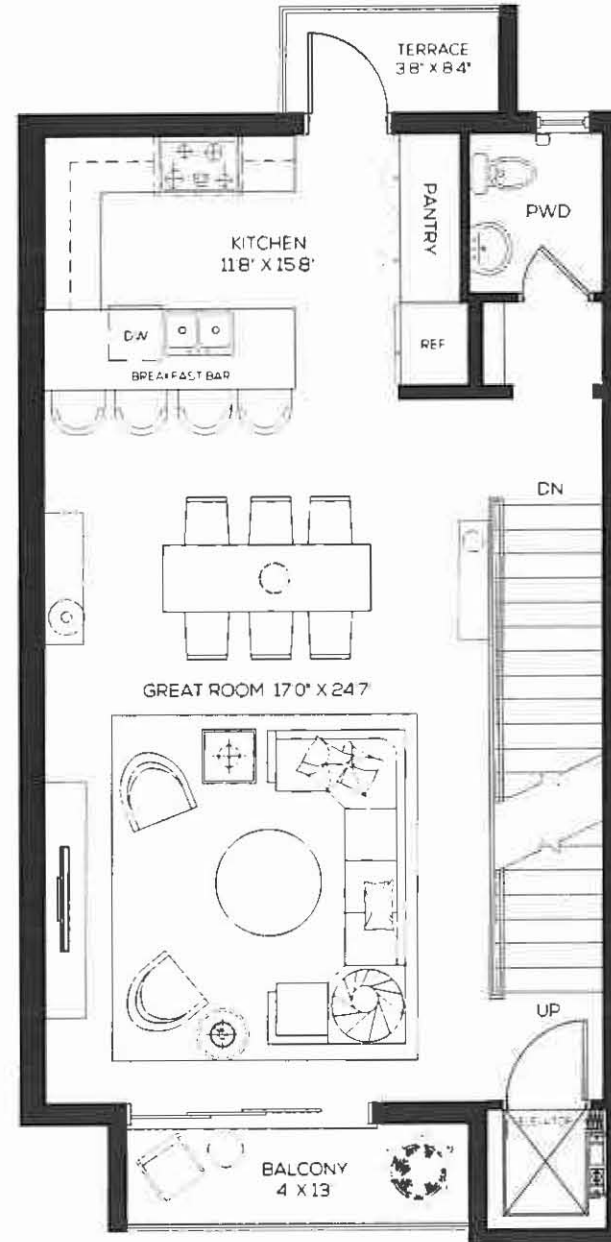
THE LAUREL 2,300 SQ.FT. / TOWNHOME RESIDENCES (OC-1, OC-5, OC-7)



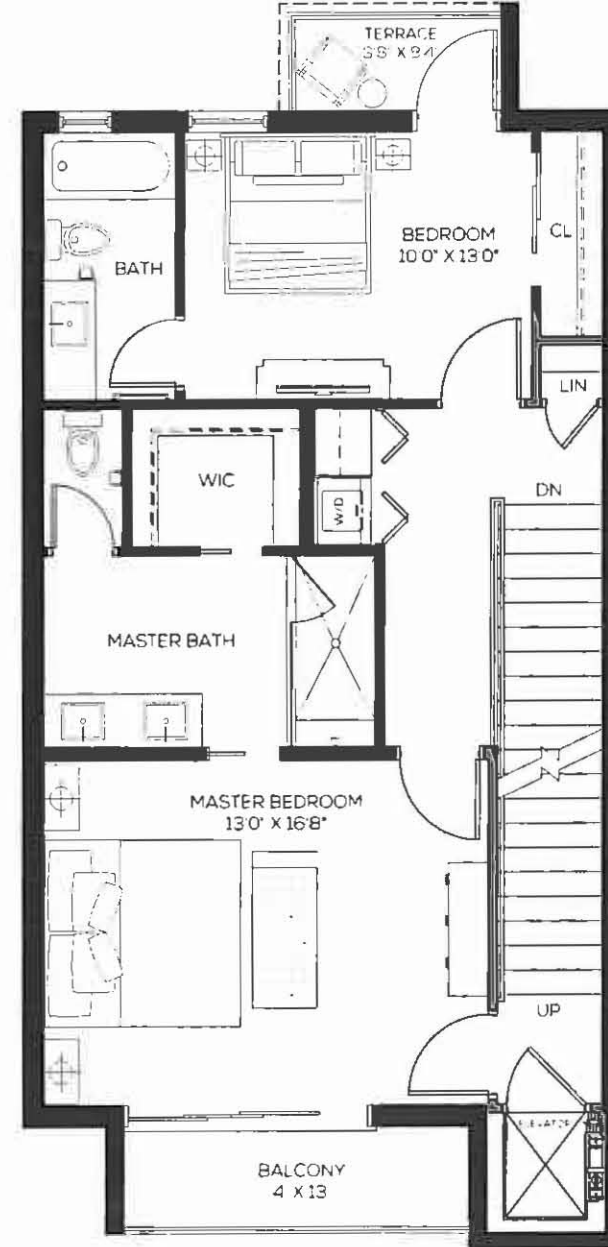
GROUND FLOOR



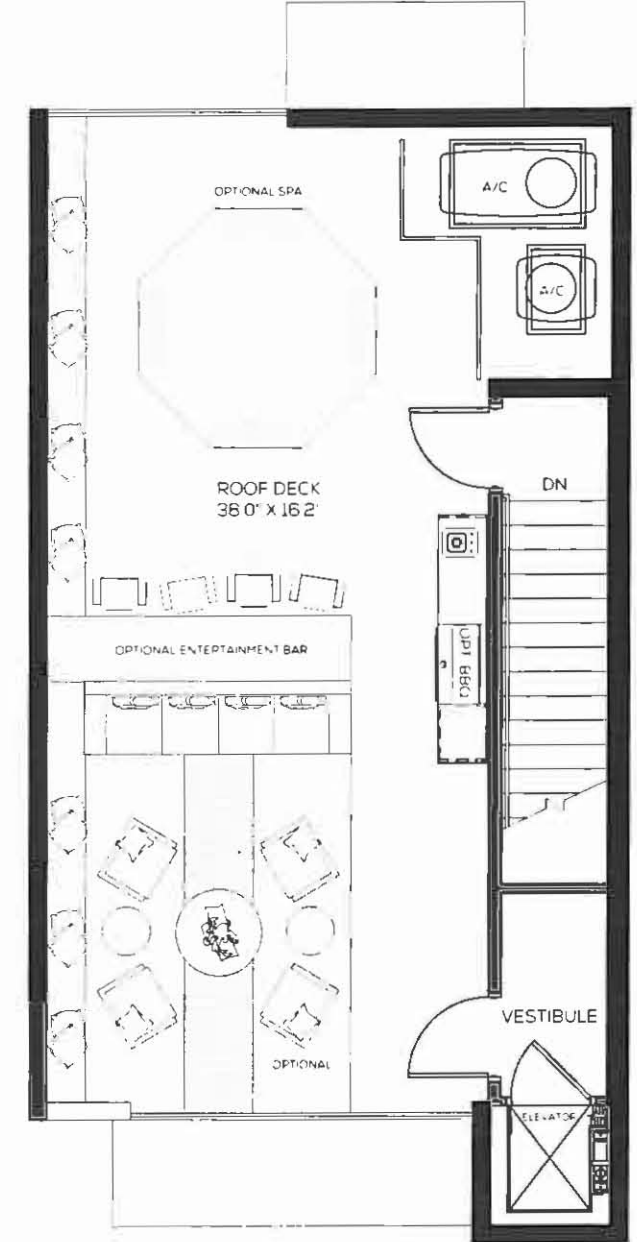
FIRST FLOOR



SECOND FLOOR

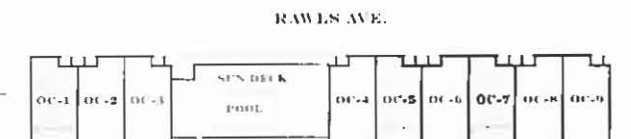


ROOF DECK



ORANGE CLUB

BOULIQUE CONDOS & TOWNHOMES IN BURNS SQUARE



ALDERMAN ST.

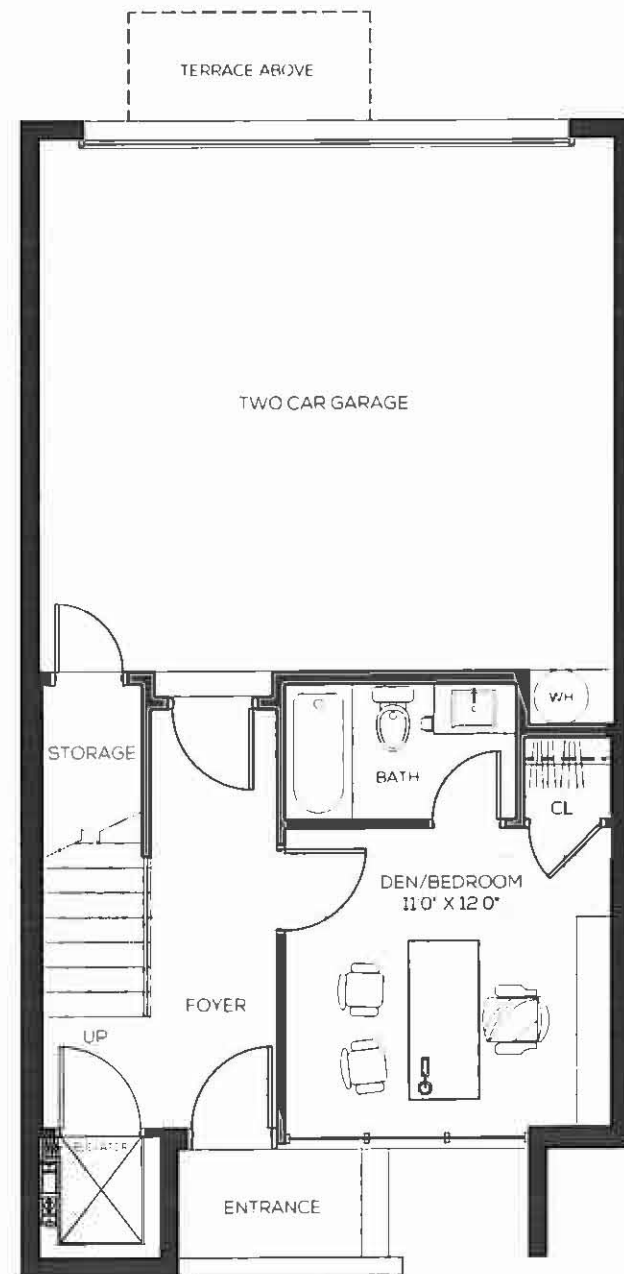
All renderings are artist's concept. Plans and specifications are subject to change without notice. Actual usable floorspace, dimensions and areas may vary from actual as built construction. E. & O.E. Furnishings, built-ins, BBQ and accessories represented are for illustration purposes only and are not included.



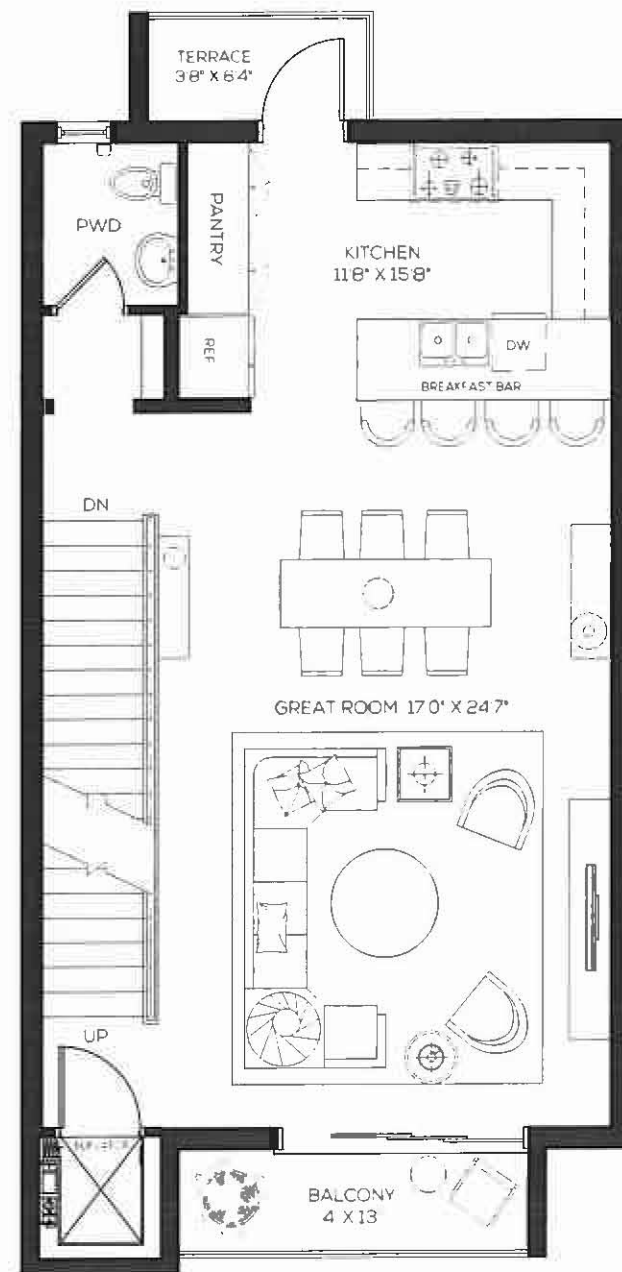
THE RINGLING 2,300 SQ.FT. / TOWNHOME RESIDENCES (OC-2, OC-6, OC-8)



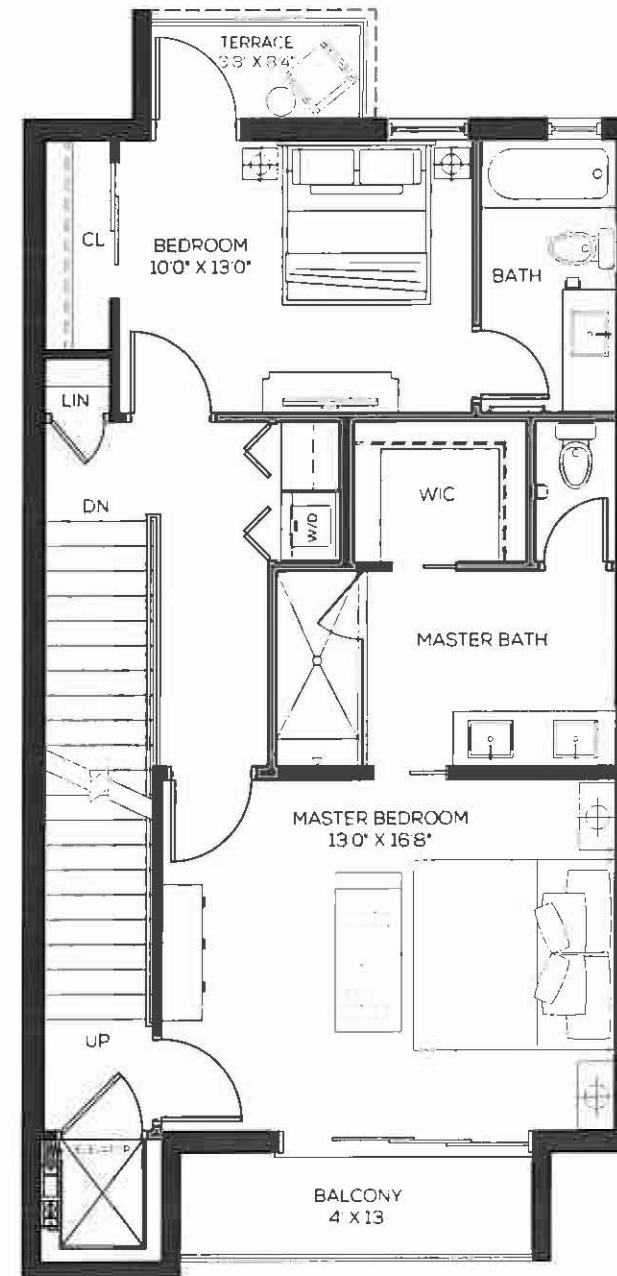
GROUND FLOOR



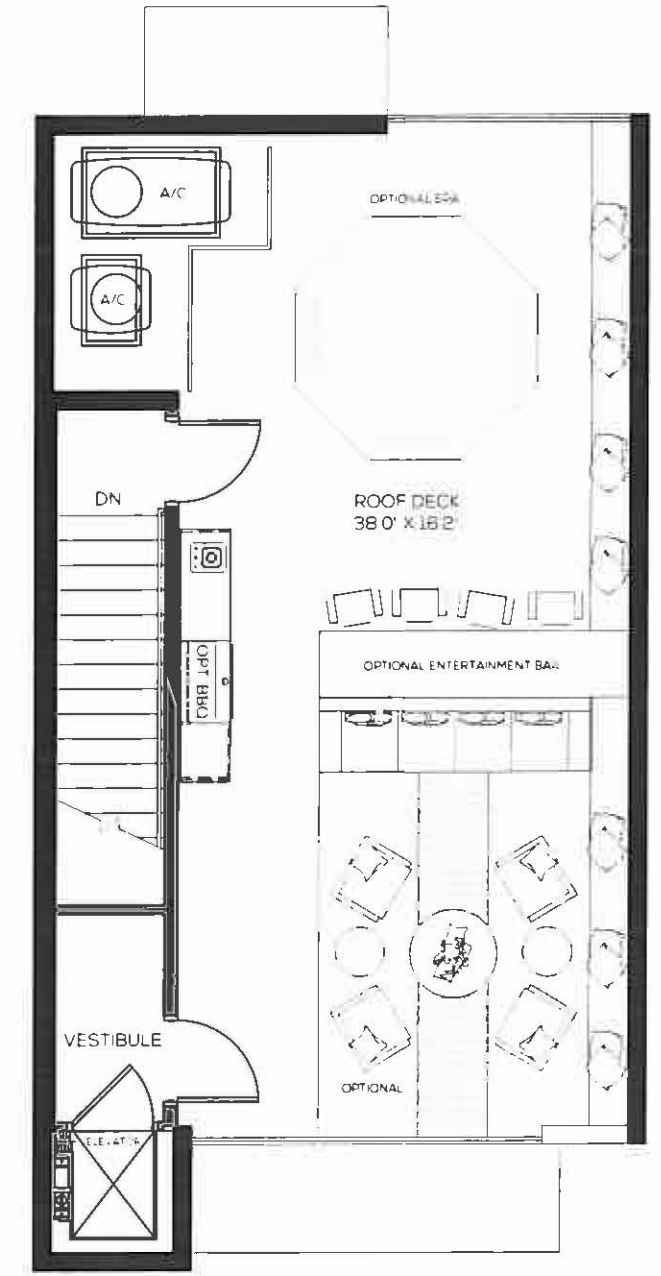
FIRST FLOOR



SECOND FLOOR

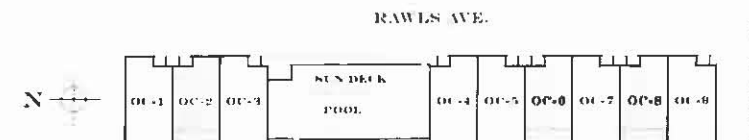


ROOF DECK



ORANGE CLUB

BOUTIQUE CONDOS & TOWNHOMES IN BURNS SQUARE



All renderings are artist's concept. Plans and specifications are subject to change without notice. Actual usable floorspace, dimensions and areas may vary from actual as built construction. E & OE. Furnishings, built-ins, BBQ and accessories represented are for illustration purposes only and are not included.

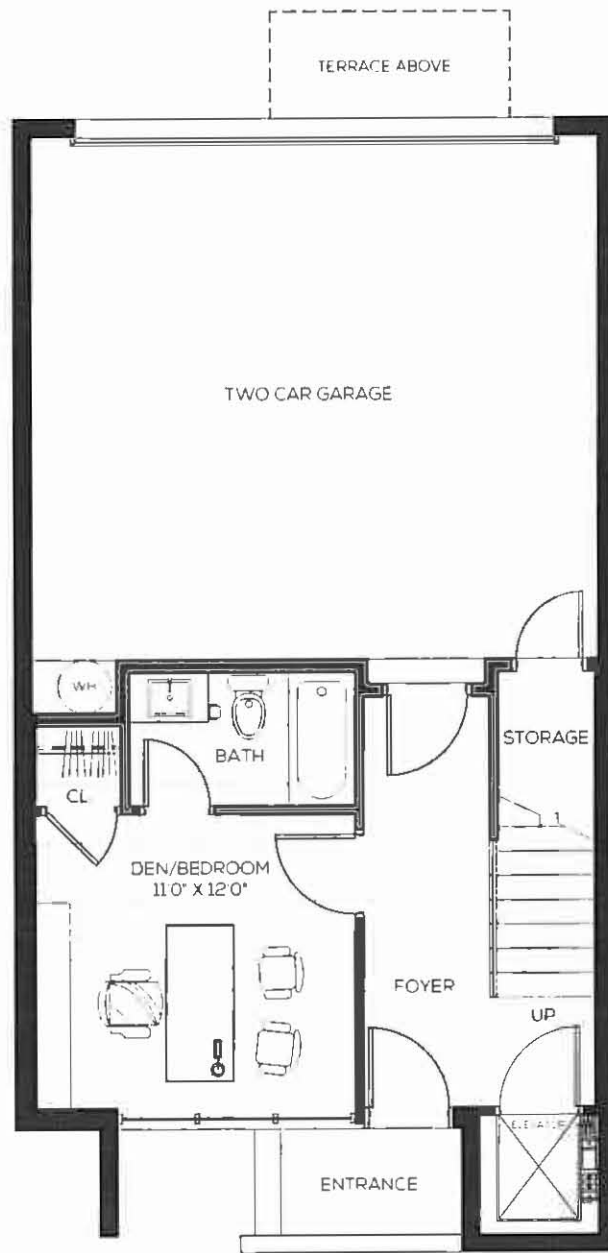
ALDERMAN ST.



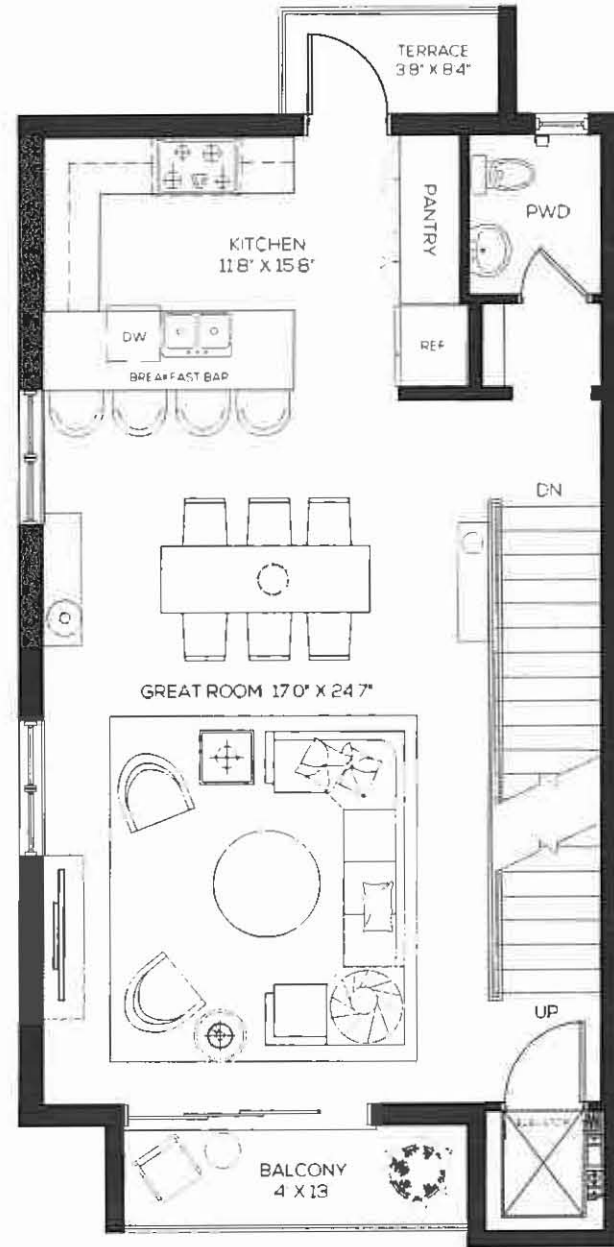
THE PALM 2,300 SQ.FT. / TOWNHOME RESIDENCES (OC-3)



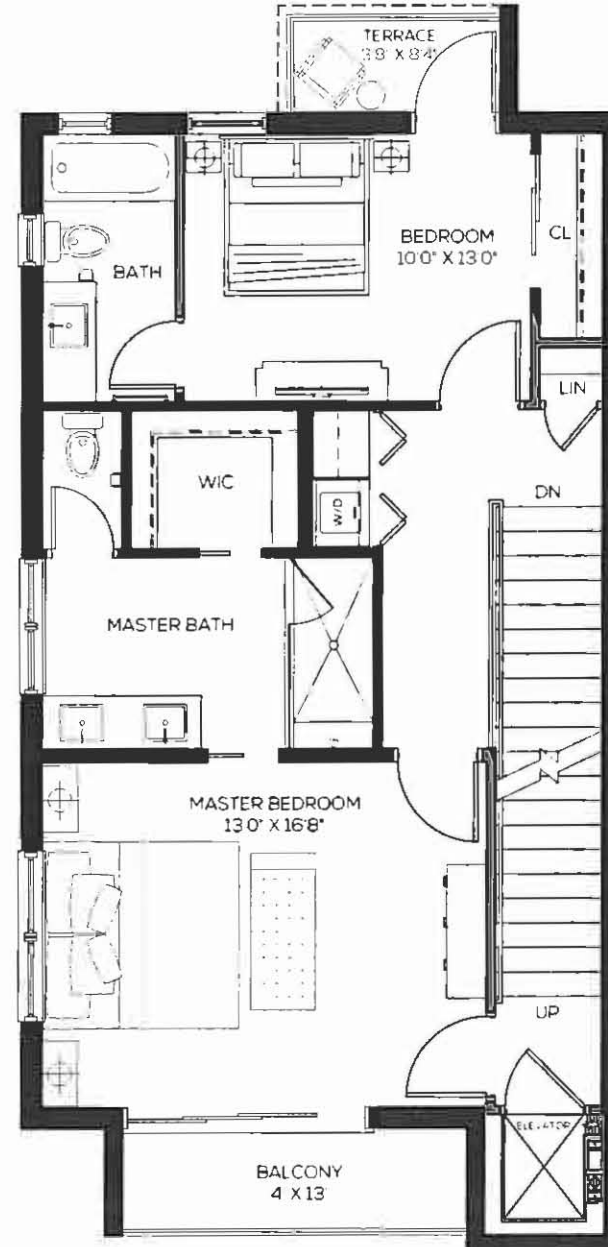
GROUND FLOOR



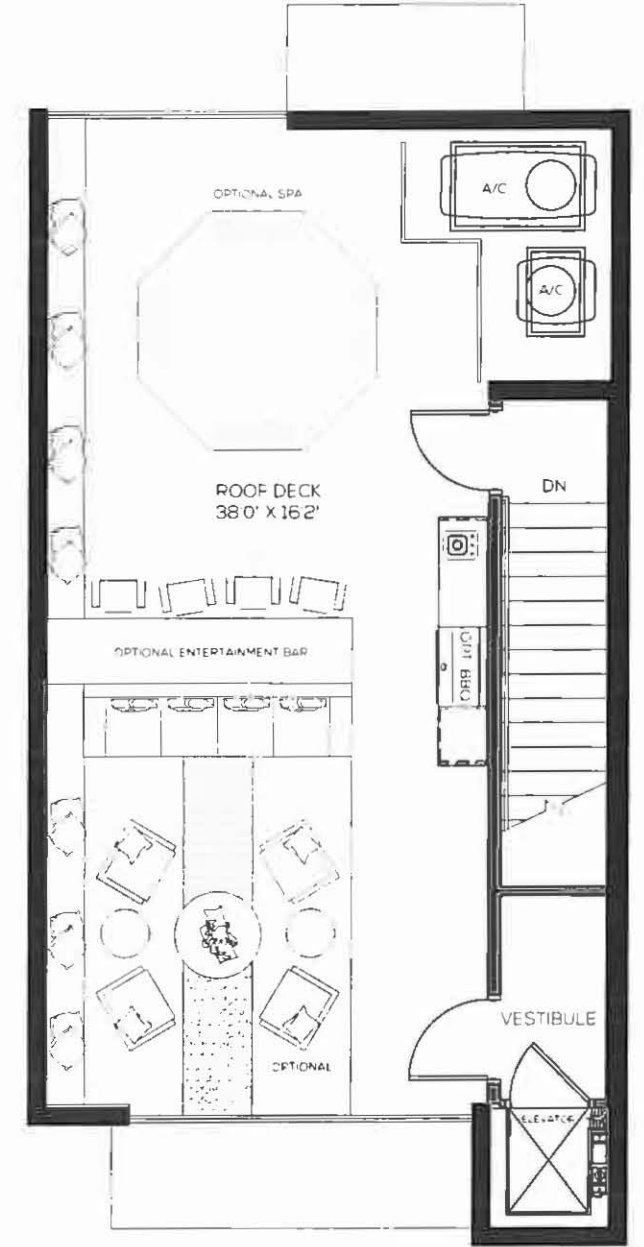
FIRST FLOOR



SECOND FLOOR



ROOF DECK



ORANGE CLUB

BOUTIQUE CONDOS & TOWNHOMES IN BURNS SQUARE



All renderings are artist's concept. Plans and specifications are subject to change without notice. Actual usable floorspace, dimensions and areas may vary from actual as built construction. E & OE. Furnishings, built-ins, BEQ and accessories represented are for illustration purposes only and are not included.

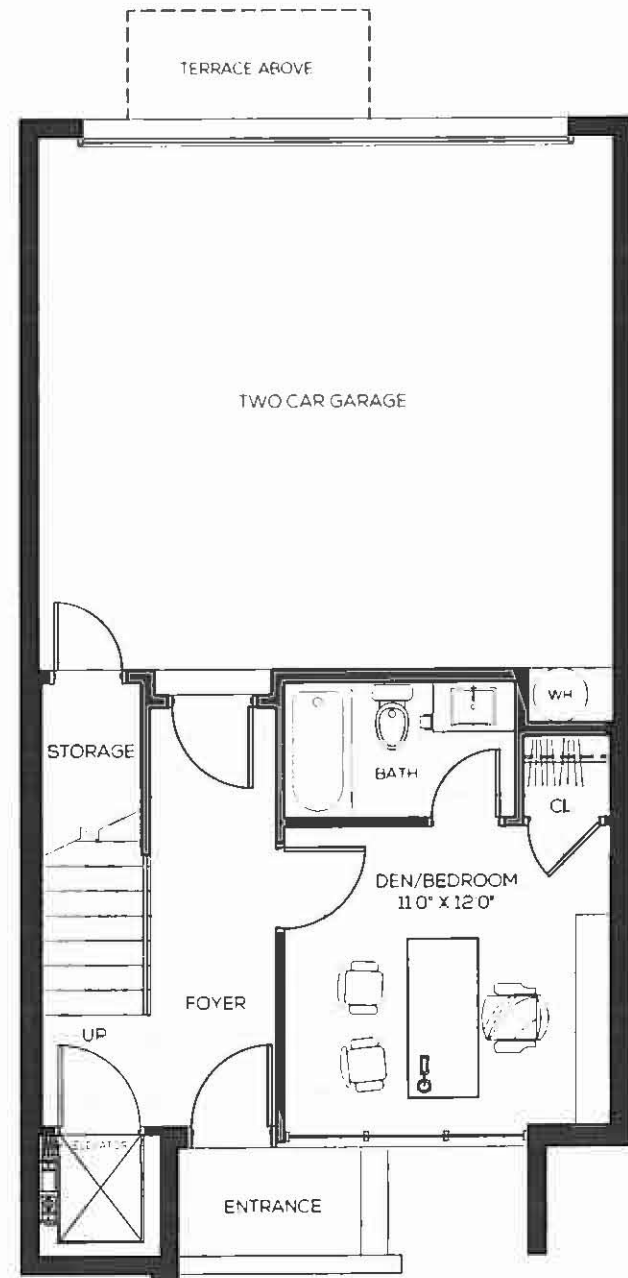
ALDERMAN ST.



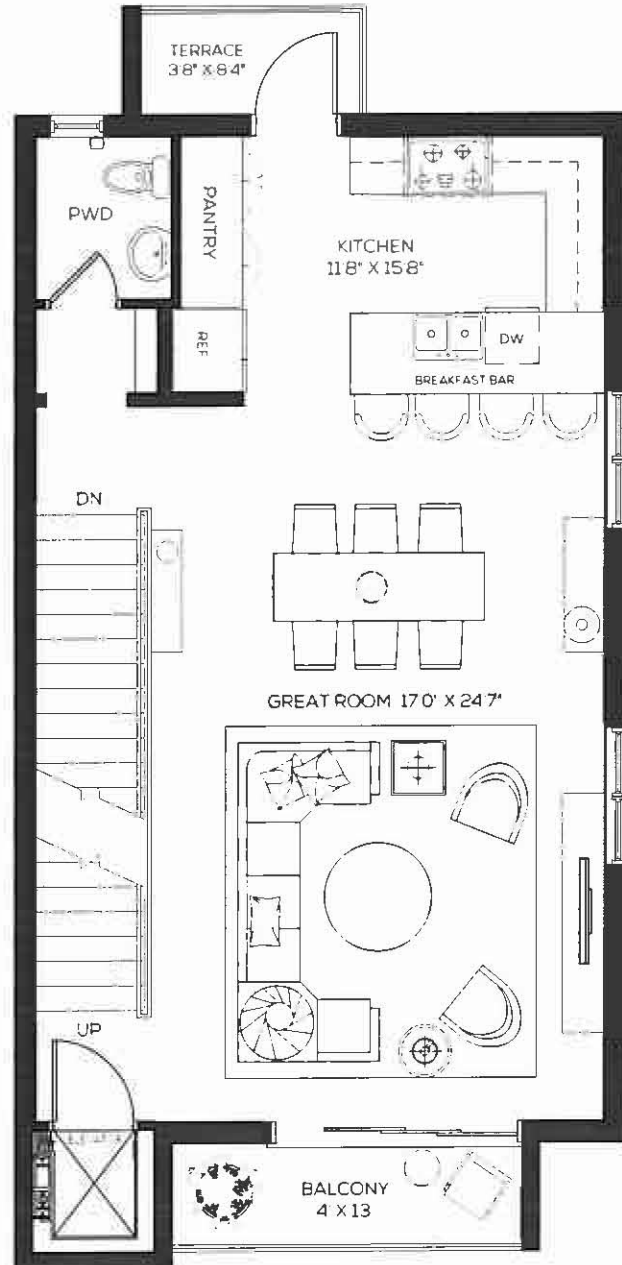
THE KEY 2,300 SQ.FT. / TOWNHOME RESIDENCES (OC-4)



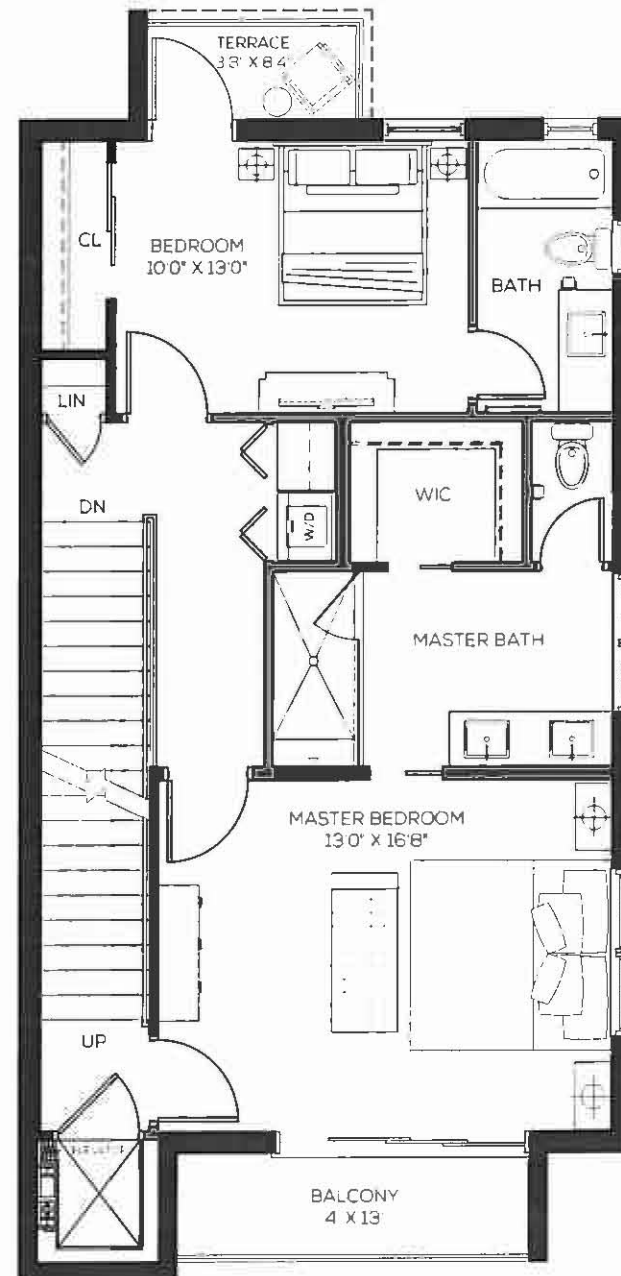
GROUND FLOOR



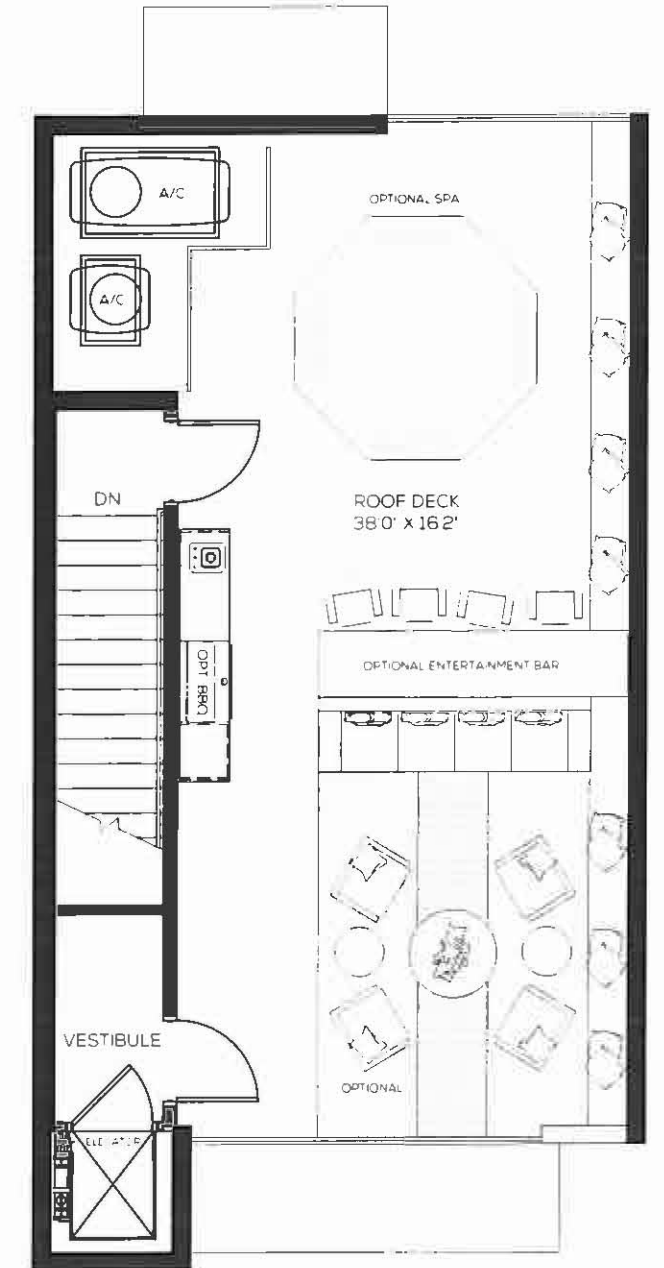
FIRST FLOOR



SECOND FLOOR

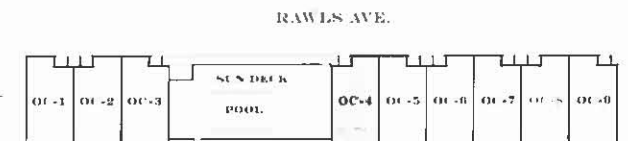


ROOF DECK



ORANGE CLUB

BOUTIQUE CONDOS & TOWNHOMES IN BURNS SQUARE



ALDERMAN ST.

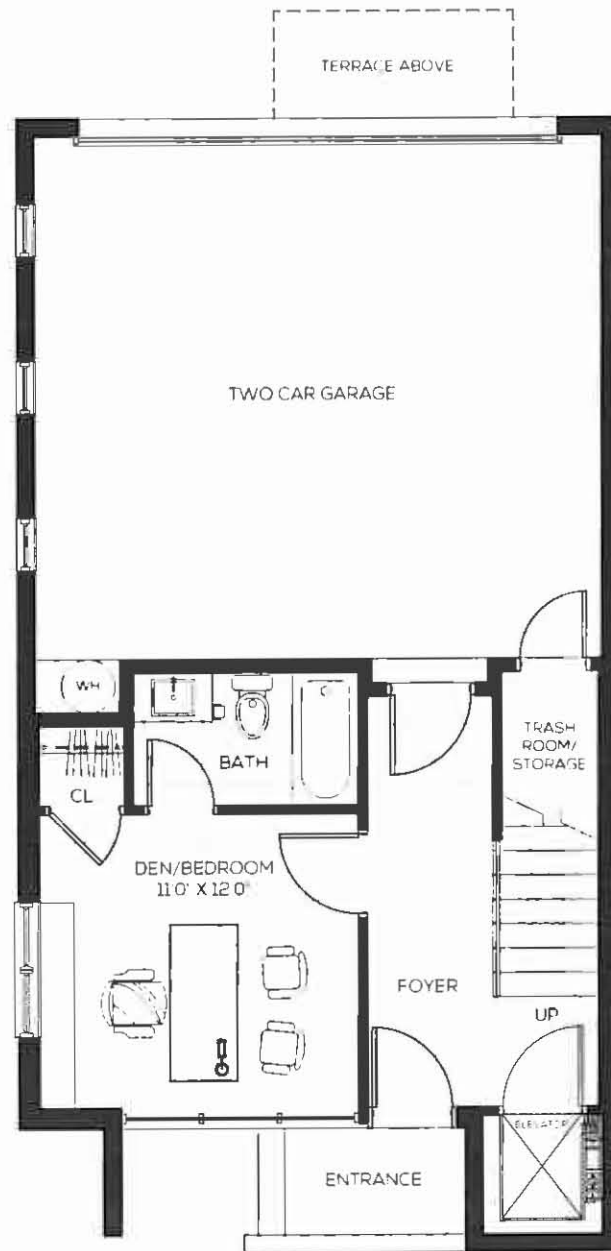
All renderings are artist's concept. Plans and specifications are subject to change without notice. Actual usable floorspace, dimensions and areas may vary from actual as built construction. E & OE. Furnishings, built-ins, BBQ and accessories represented are for illustration purposes only and are not included.



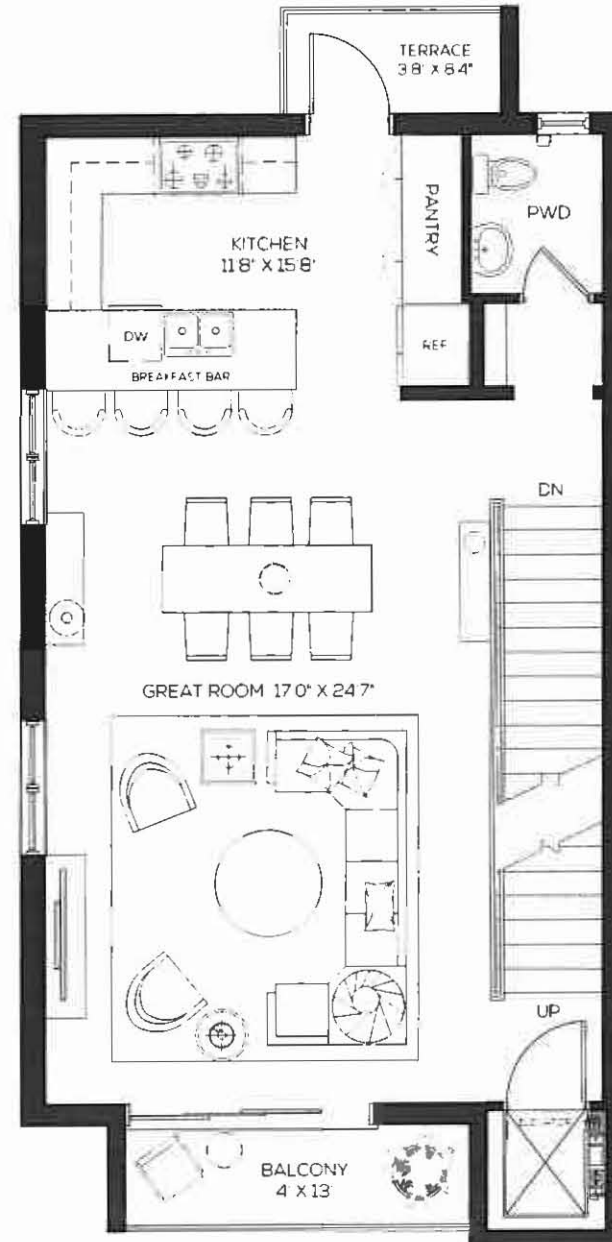
THE ISLAND 2,300 SQ.FT. / TOWNHOME RESIDENCES (OC-9)



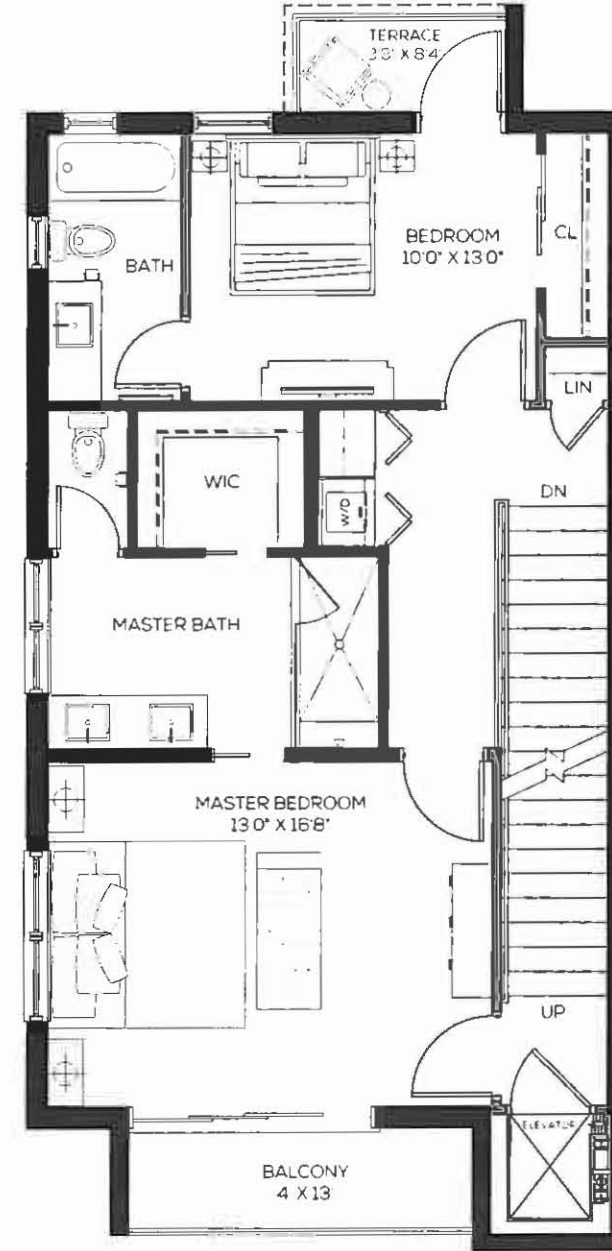
GROUND FLOOR



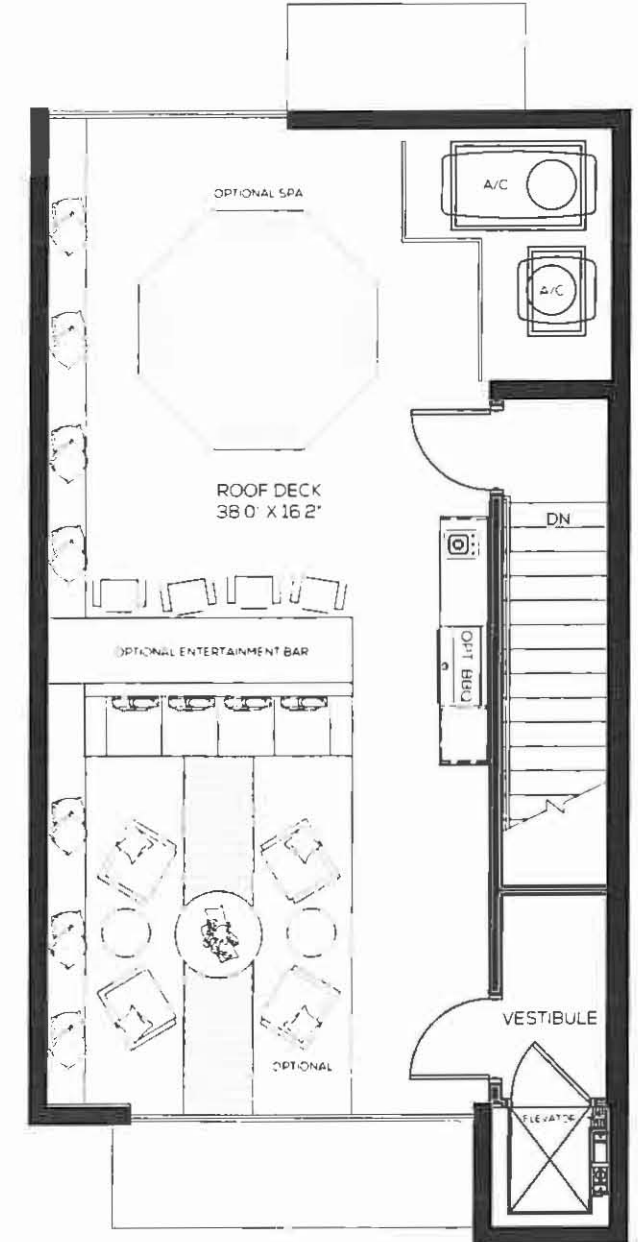
FIRST FLOOR



SECOND FLOOR

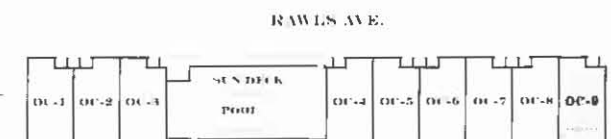


ROOF DECK



ORANGE CLUB

BOUTIQUE CONDOS & TOWNHOMES IN BURNS SQUARE



ALDERMAN ST.

All renderings are artist's concept. Plans and specifications are subject to change without notice. Actual usable floorspace, dimensions and areas may vary from actual as built. Construction E & OE. Furnishings, built-ins, BBQ and accessories represented are for illustration purposes only and are not included.



L I V I N G

LUXURIOUS 3-STOREY

I N T H E

TOWNHOME RESIDENCES

M O M E N T

FEATURES & FINISHES

CONDOMINIUM RESIDENCES

Exterior & Site

- Modern contemporary architecture
- White painted sand finish stucco complemented with tiled accents
- Exterior lighting showcasing the building's architecture and design while promoting security
- Security card access control to building
- Professionally designed landscaping
- Rectangular pool & sun lounge area, landscaped privacy walls

Building Features

- Contemporary finished main lobby with two elevators
- Mailbox and delivery counter located adjacent to lobby
- Hurricane force proof glass
- Shade covered designated parking spot per suite with guest/visitor parking
- Spacious balconies overlooking the Burns Court area & Orange Club
- Disposal chute system conveniently accessible for each floor

Suite Features

- Glass sliding door system to balcony
- 9 ft. smooth finish drywall ceilings
- Smooth finish drywall walls throughout
- Shaker style paint grade doors
- Modern polished chrome lever handle door hardware
- Contemporary style painted baseboard and door trim
- Spacious master bedroom walk-in closet with shelf & rod
- Quality porcelain floor tile throughout, excluding bedrooms and closets
- Luxurious carpet in bedrooms and closets

Kitchen & Bathrooms

- European style kitchen cabinetry, light valance, solid surface countertops and undermount stainless steel designer style sink
- Contemporary vanities, solid surface countertop and undermount white sink
- Stainless steel appliances including refrigerator/freezer, cooktop and hood, built-in oven, microwave and dishwasher
- Tiled kitchen backsplash
- Designer style white plumbing fixtures
- Designer select polished chrome single lever faucets
- Master ensuite with double vanity sinks, glass & tiled shower and private water closet as per plan
- Contemporary porcelain floor tiles in all wet areas
- Vanity mirrors with polished edges
- Guest bathroom tub with full height porcelain tile

Laundry

- Laundry room with stackable washer and dryer, built-in laundry sink and cabinetry with upper cabinet as per plan

Lighting, Electrical, Data & HVAC Systems

- Recessed lights
- Undercounter lighting at kitchen upper cabinets
- Suite utility room for electrical service/panel
- High efficiency heating & cooling system with suite controlled thermostat
- White decor style switches and receptacles throughout
- Pendant fixture pre-wire in bedrooms, kitchen island, living room, dining room and den for fixtures by purchaser
- Infrastructure pre-wiring for telephone, cable and internet

TOWNHOME RESIDENCES

Exterior & Site

- Modern contemporary architecture
- Exterior lighting showcasing the building's architecture
- White painted sand finish stucco accented with tiled details
- Professionally designed landscaping
- Rectangular pool & sun lounge area, landscaped privacy walls

Building Features

- Fully glazed direct exterior entry at ground floor
- Hurricane force proof glass
- Two car garage with automatic garage door opener
- Direct access from garage to ground floor entry foyer
- Enjoy the Sarasota view from four individual balconies
- In suite elevator with access to all floors and roof deck
- Outdoor roof deck area structure ready for you to personally customize, complete with elevator and stair access from living areas

(*Customizing and finishing of roof deck area not included)

Interior Features

- Glass sliding door system to Great Room balcony
- 9 ft. smooth finish drywall ceilings
- Smooth finish drywall walls throughout
- Shaker style paint grade doors
- Modern polished chrome lever handle door hardware
- Contemporary style painted baseboard and door trim
- Spacious master bedroom walk-in closet with shelf & rod
- Quality porcelain floor tile throughout, excluding bedrooms and closets
- Luxurious carpet in bedrooms and closets
- Modern staircase and railings from ground floor to roof deck area
- Den/Bedroom area at ground floor complete with three piece bathroom and closet

Kitchen & Bathrooms

- European style kitchen cabinetry, light valance, solid surface countertops and undermount stainless steel designer style sink
- Contemporary vanities, solid surface countertop and undermount white sink
- Stainless steel appliances including refrigerator/freezer, cooktop and hood, built-in oven, microwave and dishwasher
- Tiled kitchen backsplash
- Designer style white plumbing fixtures
- Designer select polished chrome single lever faucets
- Master ensuite with double vanity sinks, glass & tiled shower and private water closet
- Contemporary porcelain floor tiles in all wet areas
- Vanity mirrors with polished edges
- Guest bathroom tub with full height porcelain tile
- Two piece powder room with convenient access from Great Room

Laundry

- Laundry room closet with stackable washer and dryer, built-in upper and lower cabinetry

Lighting, Electrical, Data & HVAC Systems

- Recessed lights
- Undercounter lighting at kitchen upper cabinets
- Electrical service/panel
- High efficiency heating and cooling system with suite controlled thermostat
- White decor style switches and receptacles throughout
- Pendant fixture pre-wire in bedrooms, kitchen island, living room, dining room and den for fixtures by purchaser
- Infrastructure pre-wiring for telephone, cable and internet



ABOUT THE BUILDER

PASSION & EXCELLENCE

For over thirty years, the VANDYK group of companies has emerged as a leader in the development industry. Passion, vision and inspiration have developed VANDYK into a vertically integrated, progressive real estate investment operation.

Since its inception in 1979, VANDYK group of companies has expanded its operations to consist of several affiliated divisions, making it one of the most respected and recognized development corporations in Ontario, Canada. Most recently, VANDYK has expanded its venture to the USA, in Sarasota, Florida.

With an impressive portfolio consisting of a magnitude of diverse projects, VANDYK group of companies has won industry awards and has gained recognition for quality craftsmanship, superior customer service and trendsetting designs. With experience in custom home design in some of Toronto's most esteemed neighborhoods, and mid-rise condominiums such as the Frank Lloyd Wright inspired, Windows on the Green, VANDYK group of companies is a multi-disciplined development corporation.

Today the VANDYK team, as a group, is young, dynamic and forward thinking. Leveraging off of President and CEO, John C. Vandyk's, early vision of emerging infill opportunities, the VANDYK group of companies finds itself well positioned, driven by passion, commitment and tenacity, specializing in creative real-estate solutions.



FOR MORE INFORMATION, VISIT

vandyk.com